

---

## Contents

Display Introduction	2
Product Overview	2
Driver	8
Installation and Update	8
Driver Interface Preview	8
Pen Computer Setting	10
Digital Pen Setting	15
Driver Setting	21
How to Use the Digital Pen	27
Troubleshooting Solutions	28
Pen Computer Troubleshooting	28
Digital Pen Troubleshooting	29

## Display Introduction



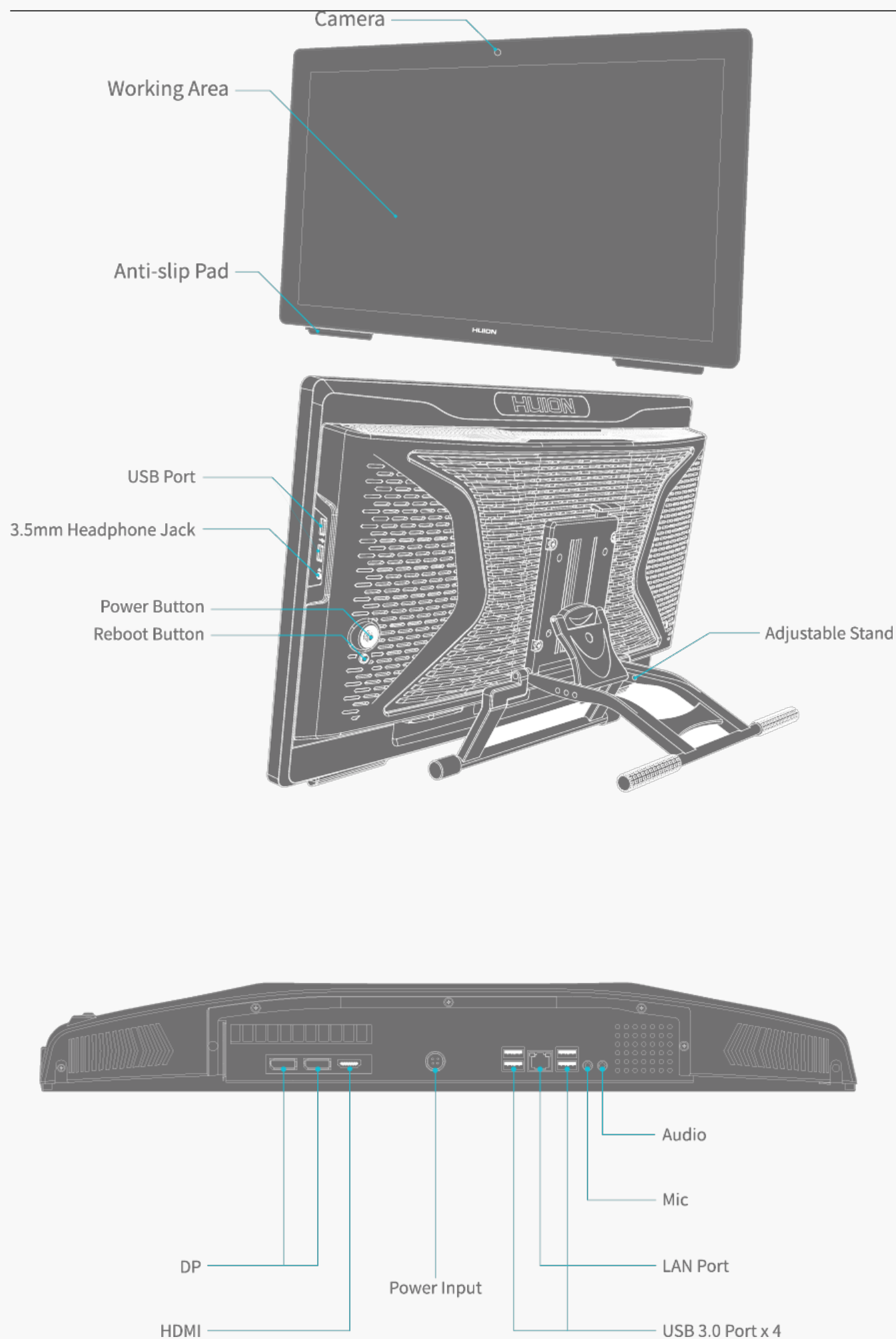
Thank you for choosing HUION Kamvas Studio 24 pen computer.

With a built-in Windows operating system, Kamvas Studio 24 is a desktop all-in-one drawing pen computer supporting both finger touch and pen touch. Kamvas Studio 24 can be used for browsing websites, playing games, and watching films as a computer offers, and at the same time can be used for writing, drawing, graphic design, and video editing as a pen display does, which makes it powerful and useful. Moreover, PS, AI, SAI, GIMP, Painter, and many other professional programs can run smoothly on Kamvas Studio 24.

To better know and use this product, please read this user manual carefully.

Note: Design and specifications are subject to change without notice. The pictures in the User Manual are for reference only.

## Product Overview

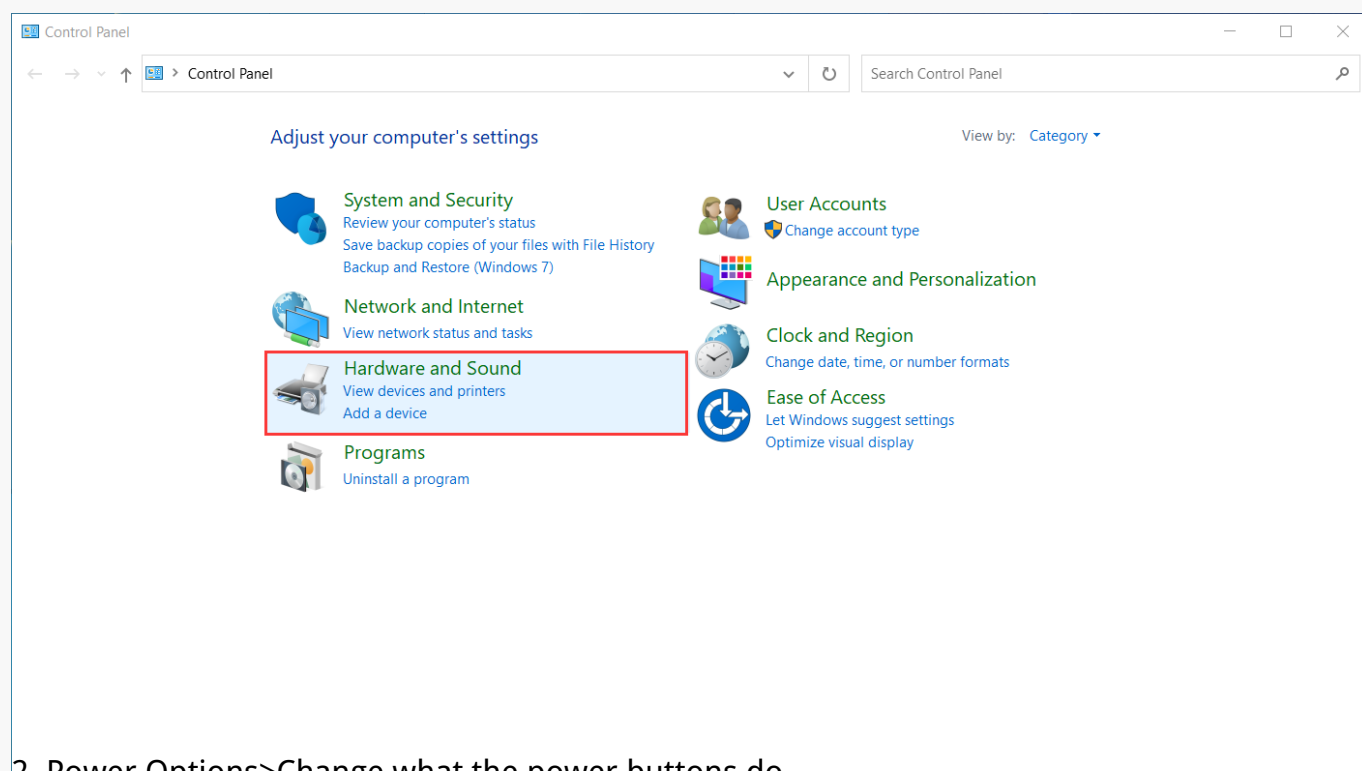


The "Power Button" can be used as a Five-direction Switch. The specific operating instructions are as follows:

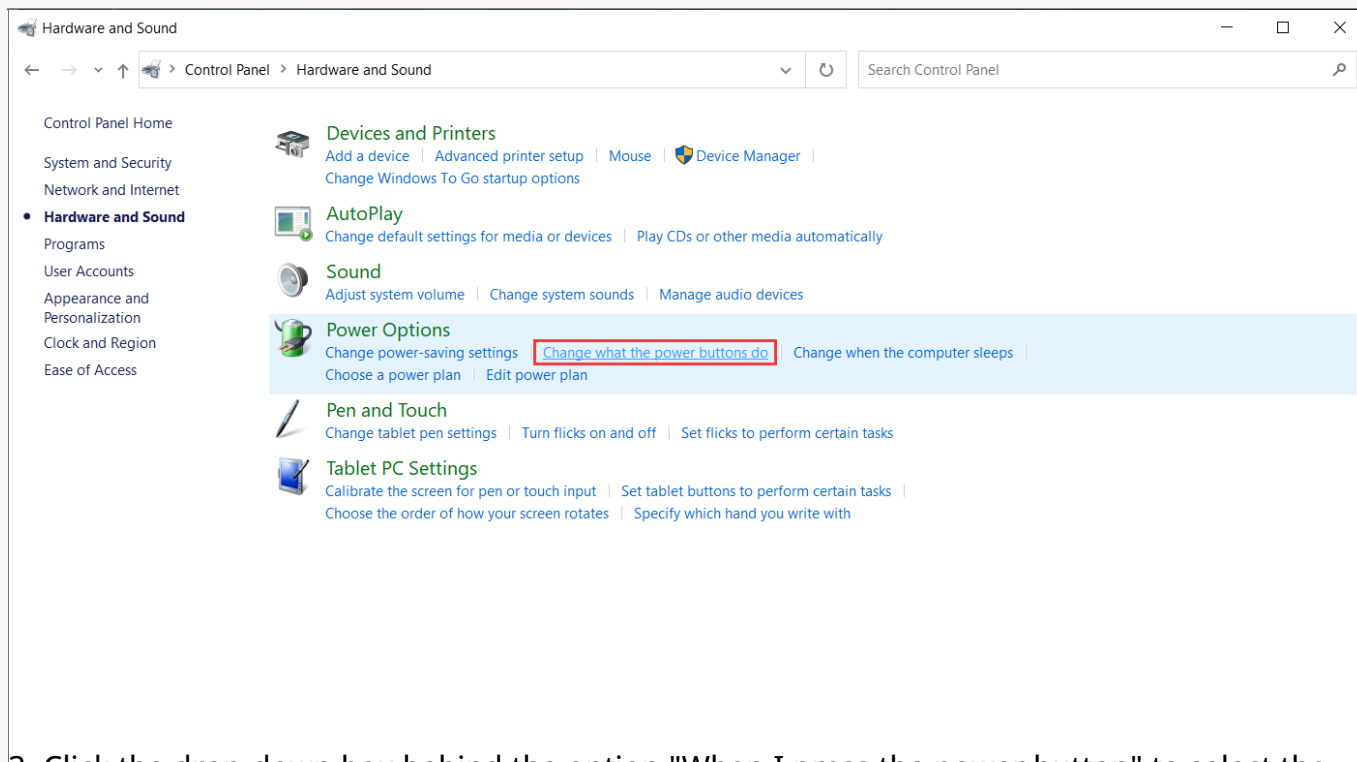
Current State	Operation	Function
Off	Press the center of the switch button	Power on the pen computer
On	↑ Push the switch button up	Adjust screen brightness (+)
On	↓ Push the switch button down	Adjust screen brightness (-)
On	→ Push the switch button to the right	Call up the OSD menu
On	Press the center of the switch button	Go to sleep by default (customize in the system)
On	Long press the center of the switch button	Forcibly shut down the pen computer
OSD Interface	↑ Push the switch button up	Up
OSD Interface	↓ Push the switch button down	Down
OSD Interface	← Push the switch button to the left	Back to the previous menu
OSD Interface	→ Push the switch button to the right	Confirm/Go to the next menu

The function of the "Power Button" can be set in the system.

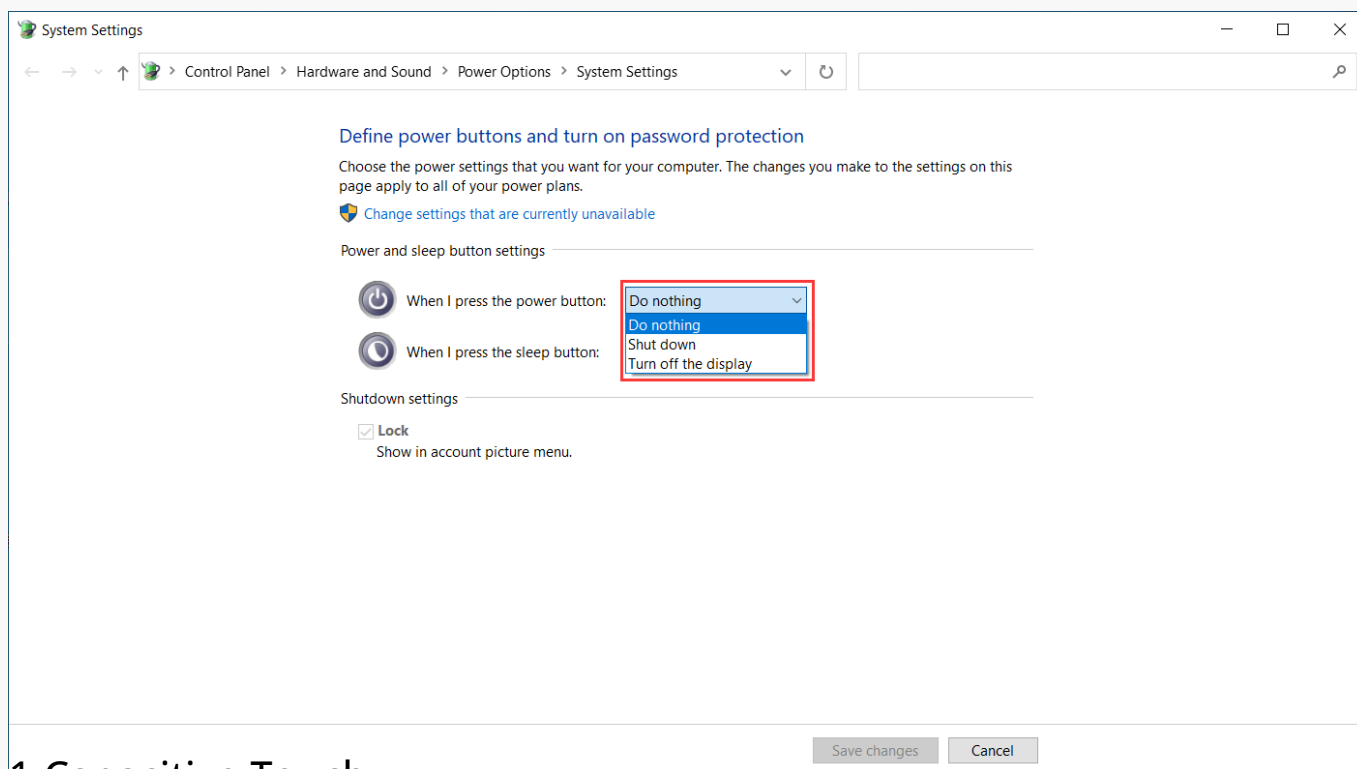
1. Open the Control Panel > Hardware and Sound.



2. Power Options>Change what the power buttons do.



3. Click the drop-down box behind the option "When I press the power button" to select the function you want to set for the power button.



## 1.Capacitive Touch

Capacitive touch, in cooperation with the electromagnetic digital pen, can greatly improve creation efficiency.

Touch gestures preset in Windows are supported. Other functions depend on whether they are supported by the software.

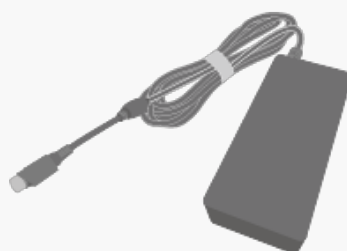
General Functions		
Finger	Gestures	Action
One-finger	Tap	Select
	Double tap	Open the file
	Press and hold	Show more commands (like right-clicking)
	Press and drag	Move the file
Two-finger	Slide horizontally or vertically	Scroll
	Pinch in or stretch out	Zoom out or zoom in
Three-finger	Swipe up	Show all open windows
	Swipe down	Show the desktop
	Swipe left or right	Switch between open apps or windows
Four-finger	Swipe up	Show all open windows
	Swipe down	Show the desktop
	Swipe left or right	Switch desktops

Notice: The touch input can be disabled in the driver.

## 2.Accessories



Adjustable Stand



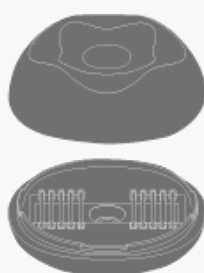
Power Adapter



Power cable



Digital Pen



Pen Holder



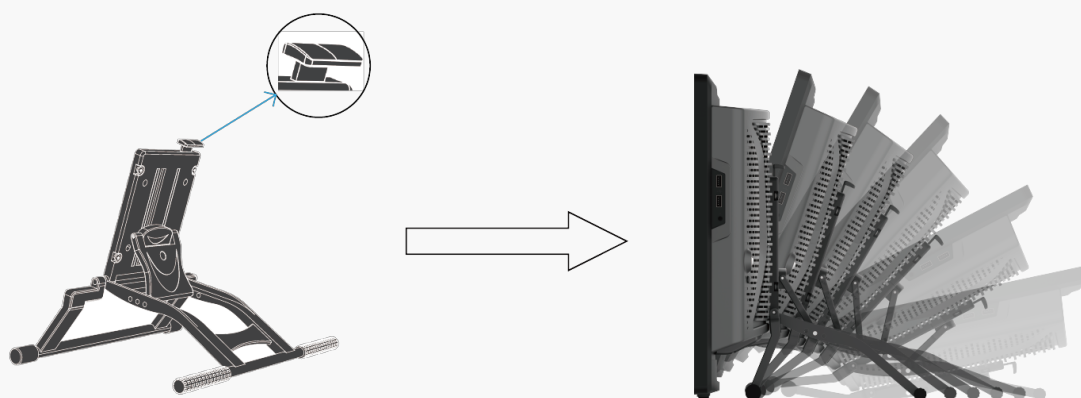
Cleaning Cloth



Quick Start Guide

## 3.Stand Adjustment

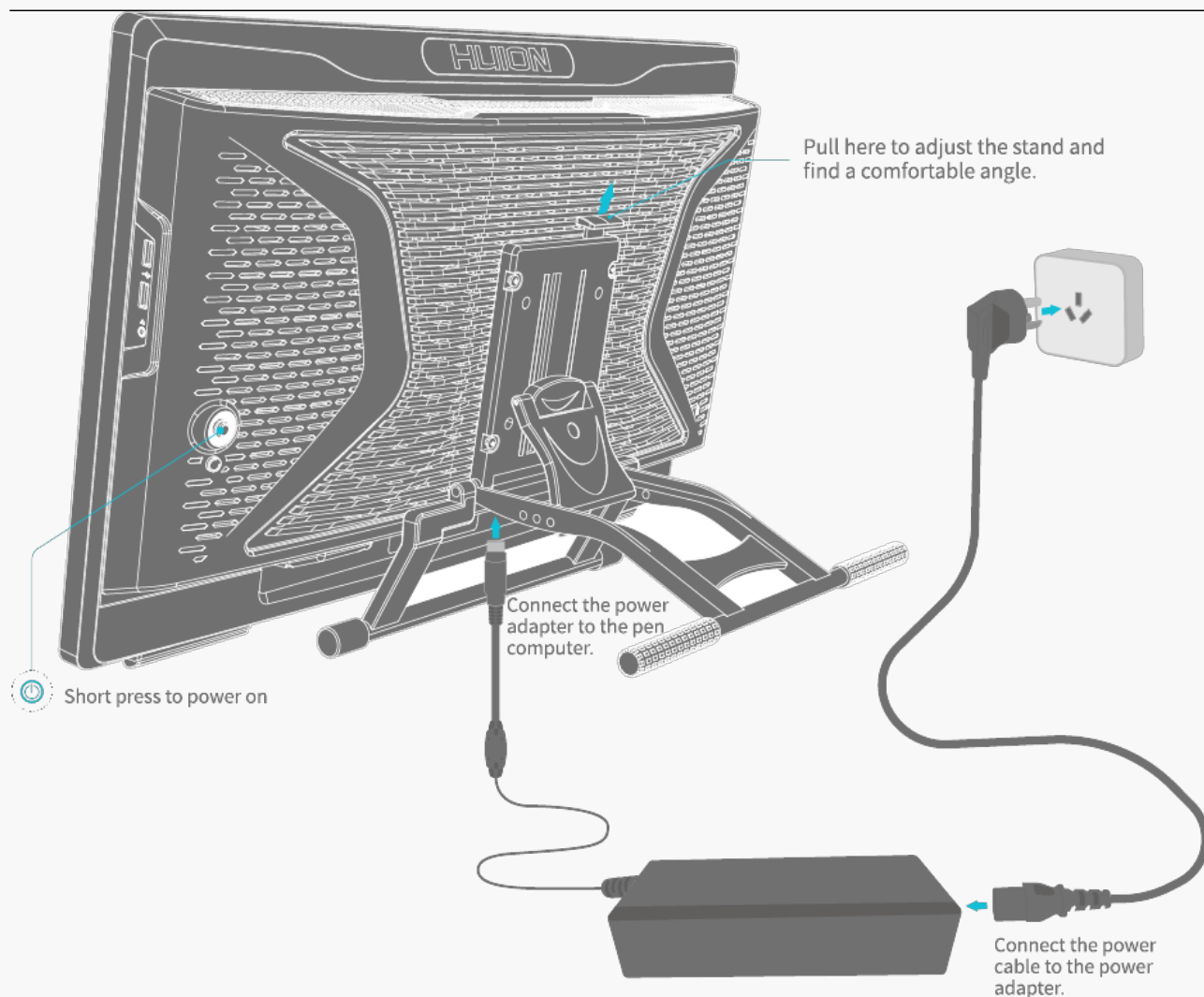
This adjustable drawing stand is specially designed for your all-in-one pen computer and you can adjust it to find a comfortable angle according to your usage habit when painting and creating.



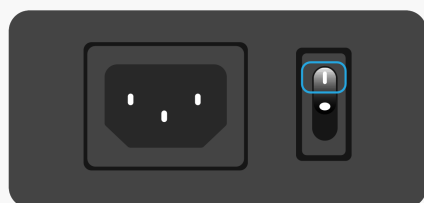
#### 4.Connection

Connect the pen computer to the power supply with the power adaptor and power cord in the package. Press the POWER button to start it.





\*Please set the switch on the power adaptor to "I".



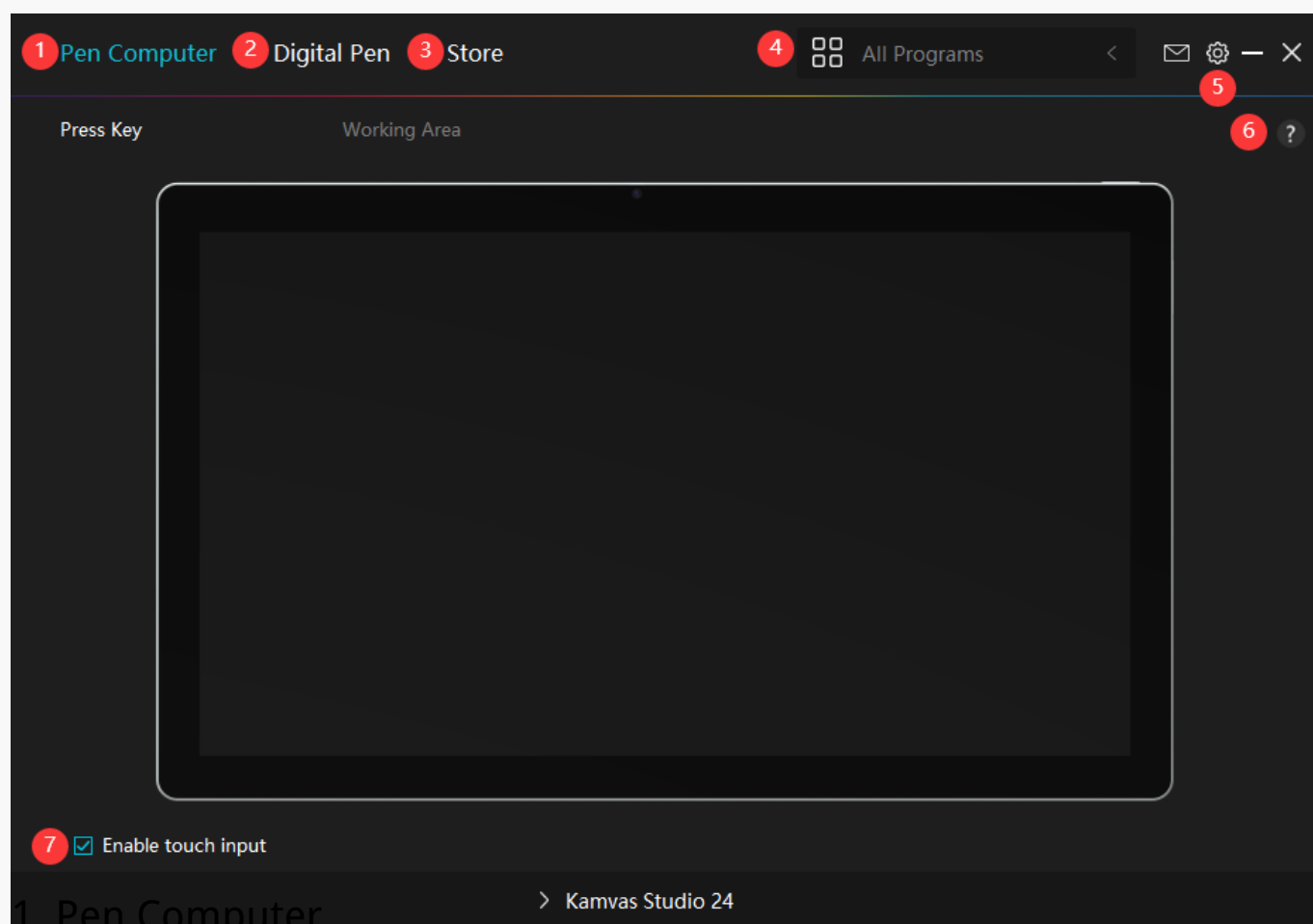
## Driver

### Installation and Update

The driver has been preinstalled on Kamvas Studio 24.

The driver will be updated constantly. It is suggested to check and update the driver from our official website [www.huion.com/download/](http://www.huion.com/download/) so as to ensure that the device has the latest features and functions.





## 1. Pen Computer

On the “Pen Computer” interface, users can set the Working Area of the pen computer.[See Section](#)

## 2. Digital Pen

Users can set functions of the pen on this “Digital Pen” interface, including Press Key, Mode selection, Pressure Sensitivity Adjustment, and Pressure Test.[See Section](#)

## 3. Store

Huion Store is where you can get the latest information about the product such as its FAQ or sales promotion. In addition, you can also purchase Huion’s other products or accessories here.

## 4. Add Programs

1. Some programs which have already been opened will appear for you to choose from after clicking Add a Program on the screen. For more programs, click Browser and choose the item that you want to get it added.

2. For different programs, the press keys, the working area and the pressure curve can be set

differently. When switching from a program to another, the driver will automatically switch to the set functions accordingly.

3. When you select "All programs", the functions of press keys that you set are valid for every program. By clicking Add a Program from the drop-down list, you can set the functions for a specific program and hence have unique settings for different programs. After that, when you launch a specific program, the Driver will automatically recognize it and the setting features will change to its corresponding ones.

## 5. Setting

Users can set the functions of a driver on this interface, including check out Device information, Backup setting, General setting, and its version. [See Section](#)

## 6. Common Problems

Click "?" and jump to Forum in our website <https://support.huion.com/en/support/home> to get a user manual or feed back the problems to us.

## 7. Enable Touch Input

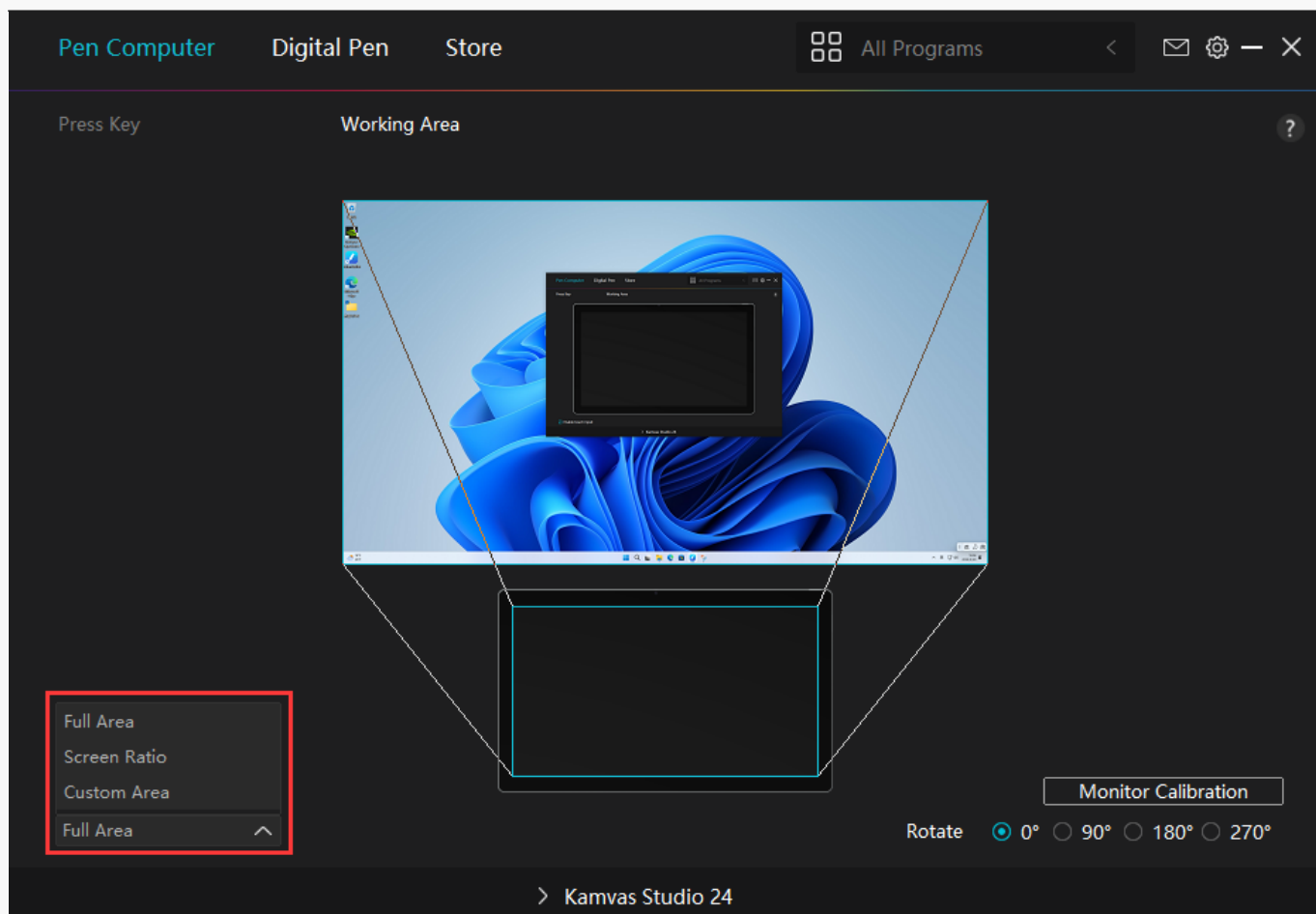
"Enable touch input" is checked by default. In this case, the finger touch can be used. If "Enable touch input" is unchecked, the finger touch is disabled. In this case, touch input can only be realized by the digital pen.

Pen Computer Setting

Select the Working Area tab to adjust the ratio of the distance of pen movement on the pen computer to that of the corresponding cursor movement on the monitor. By default, the entire active area of the pen computer maps to the whole monitor.

### 1. Working Area Setting

Define the pen computer area that will be mapped to the monitor. Three modes on the driver can be chosen:



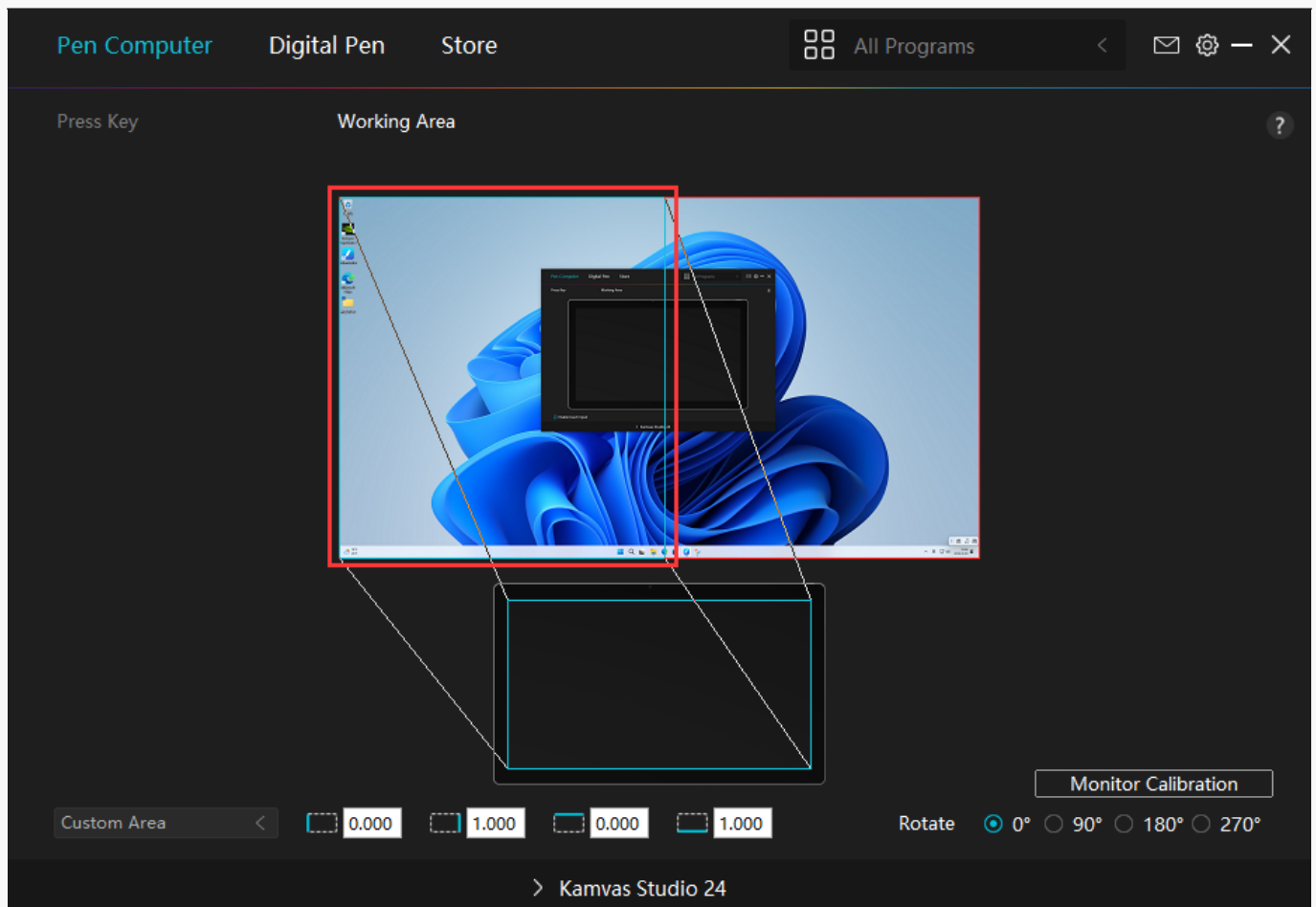
[1] Full Area: The entire active area of the pen computer will be mapped to the monitor. It is the default setting.

[2] Screen Ratio: The ratio of the active pen computer area depends on that of the display device. In Screen Ratio mode, these two ratios keep the same. For example, if you choose the screen ratio and draw a circle on the pen computer, then a circle appears on the monitor that has been connected to the pen computer, in this case, some parts of the screen of the pen computer may not work. But if you don't choose the screen ratio and draw a circle, then the circle may change into an oval on the monitor.

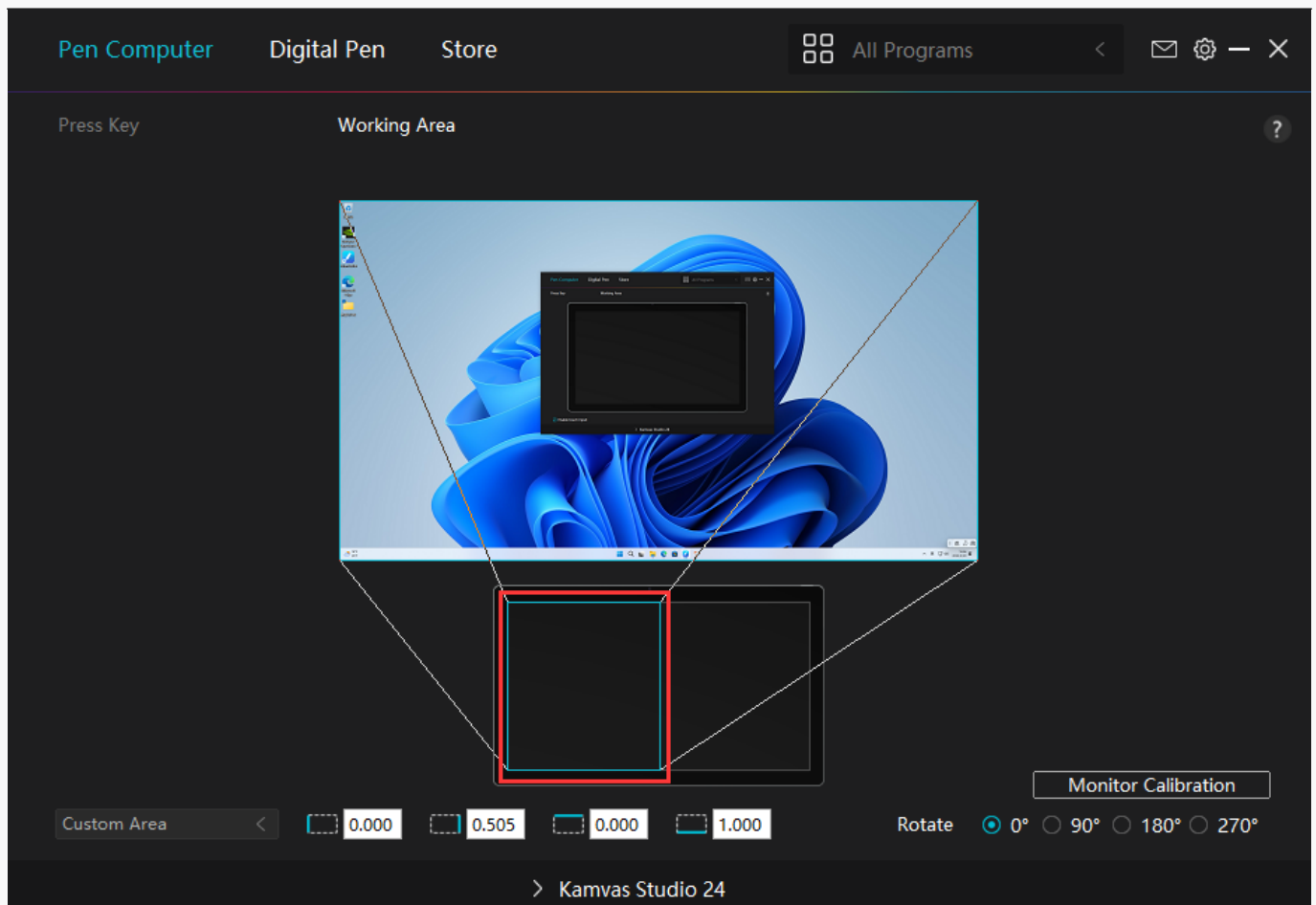
[3] Custom Area:

1> Enter coordinate values.

2> Users can adjust the working area of the pen computer by changing the outlines of the smaller rectangle. Users can also drag the two blue rectangles to select the active areas of the digital pen on the screen and the pen computer. (see picture 1 and 2).



Picture 1

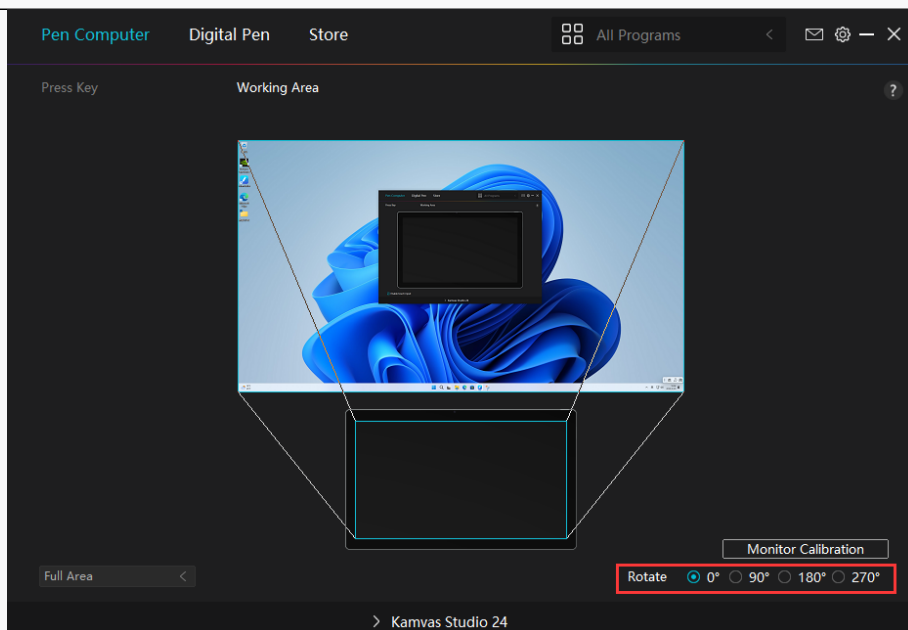


Picture

2

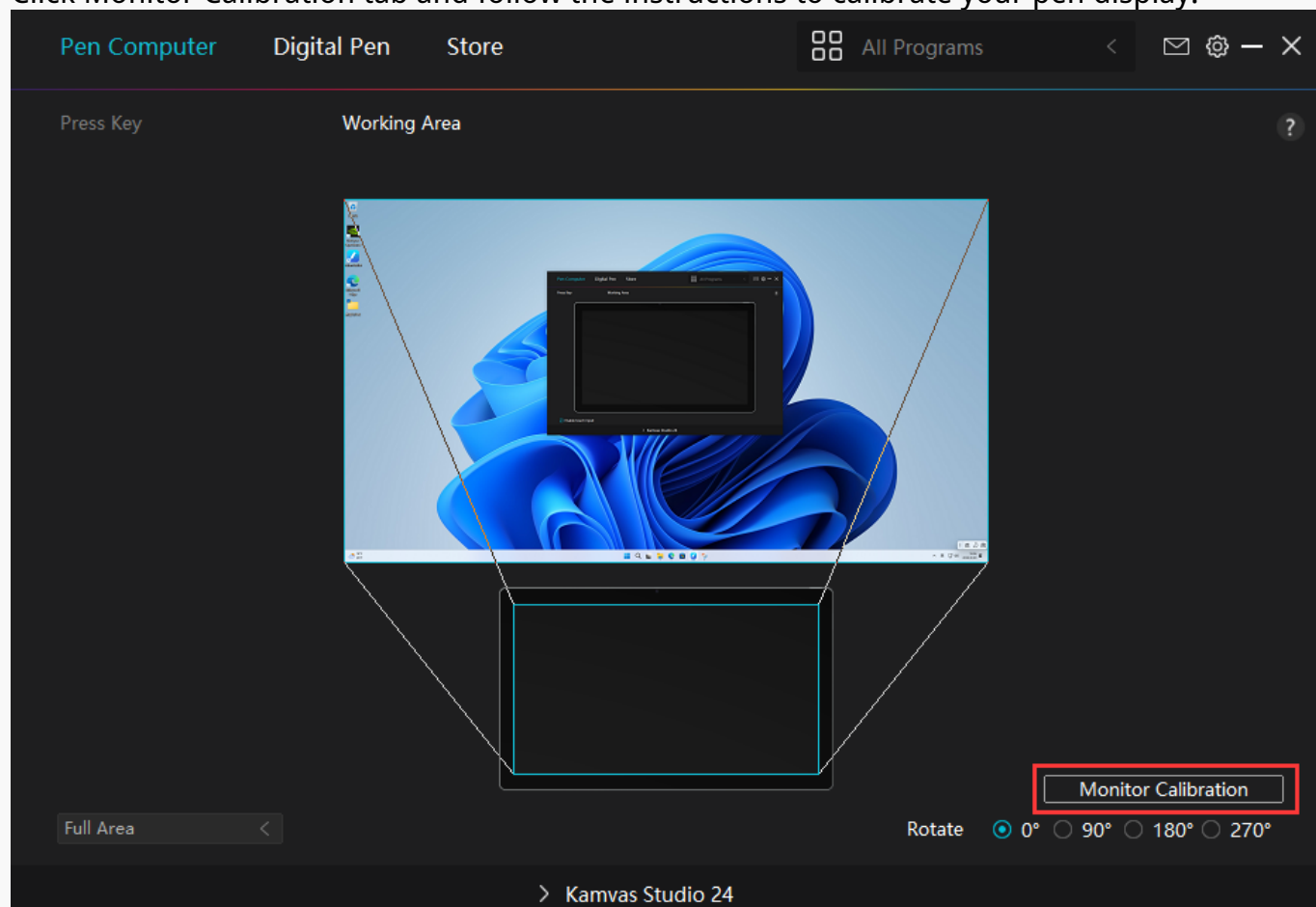
## 2. Rotate Working Area

Both left-handed and right-handed users can freely use the pen computer because it can be rotated by 0°, 90°, 180° or 270°.

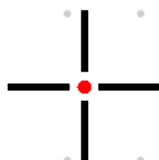


### 3. Calibrate Your Pen Display

Click Monitor Calibration tab and follow the instructions to calibrate your pen display.



Please use the digital pen to click on the center red dot of the cross in a common pen-holding posture. You can cancel Calibration and restore default.



Note: Please Use the Digital Pen to Click on the Center Red Dot of the Cross in A Common Pen-Holding Posture

Cancel Calibration

Recalculate

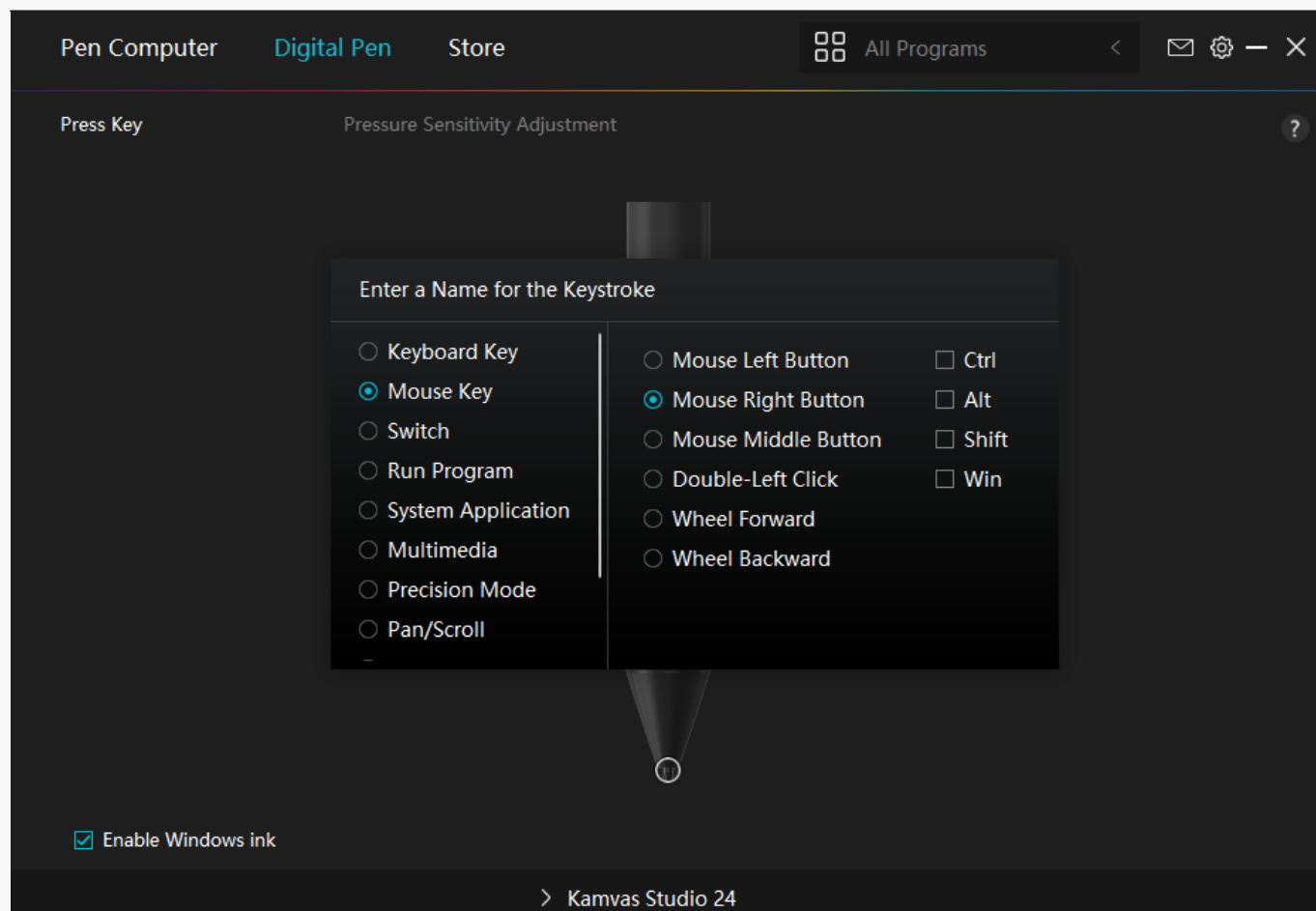
Restore Default

## Digital Pen Setting

### 1. Press Key

You can use this digital pen to interact with your device, including drawing, writing, moving files, or activating the functions of pen press keys.





Refer to this table of settings below to help you decide if you want to change the existing settings.

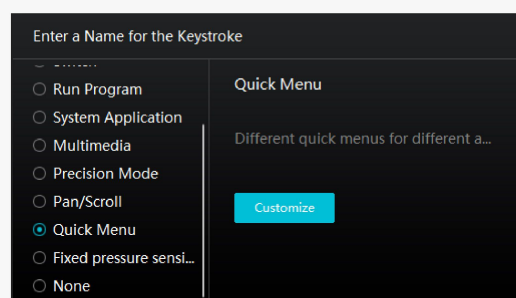
Note: The performance of functions in the table below is up to the device that you have connected. And this table is subject to change without notice. The settings of the press keys' functions can be found in the following list. The functions of the press keys can be set as:

Keyboard Key	Click on the input box above and enter a valid key combination to create a shortcut.
Mouse Key	Select the functions of a Mouse or Wheel. Mouse: Mouse Left Button, Mouse Right Button, Mouse Middle Button, and Double-left Click. Wheel: Wheel Forward and Wheel Backward. Other functions: Ctrl, Alt, Shift, and Win.
Switch	Select between Switch Screen, Switch Brush, Mouse Mode On/Off, and Game Mode On/Off.
Run Program	Click Browse and select the program that you want to run quickly. After that, press the key to launch the item.
System Application	You can apply these functions to press keys: Lock the Screen, Sleep, Power Off, Show/Hide Desktop, Task View, Start Menu, and Calculator.
Multimedia	You can apply these functions to press keys: Previous Song, Next Song, Play/Pause, Volume up, Volume down, and Muted.
Precision Mode	You can toggle between normal precision and a precision that you

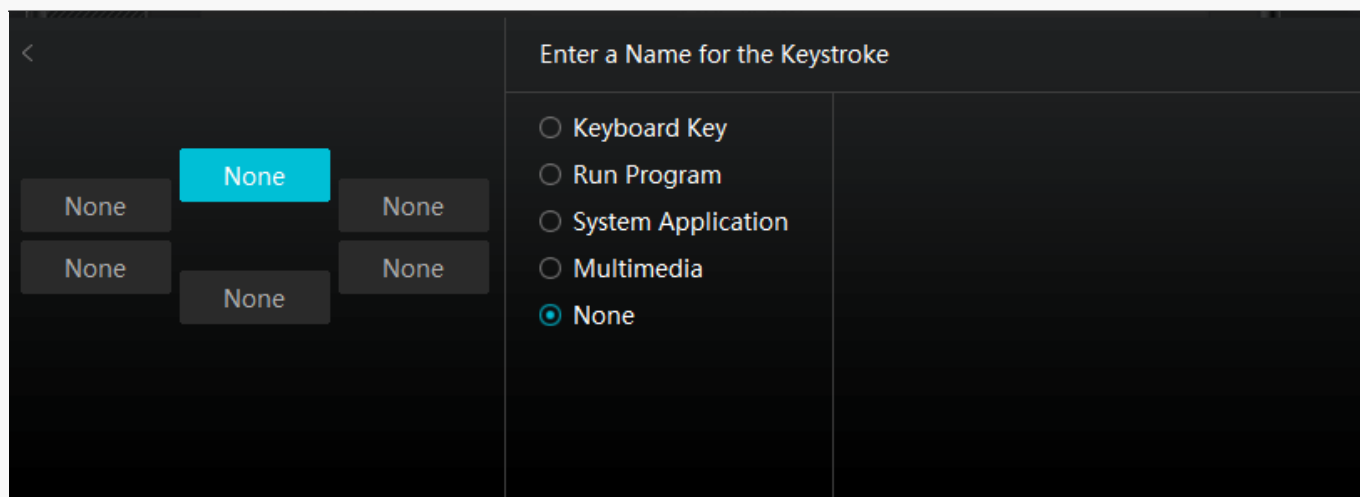
	choose, from Fine to Ultra Fine. In the Precision Mode window that appears, move the slider to set the precision that you toggle into. For example, if you assign Precision Mode to a pen button, when you press the pen button, you switch to working in the precision that you selected from the slider. When you press the pen button again, you switch back to working in the normal precision. Press “Esc” or press the pen button for the third time to exit Precision Mode.
Pan/Scroll	This function allows you to pan and scroll in a document or item by moving the pen tip up and down or right and left. When you select Pan/Scroll, the Scroll Speed window appears. Move the slider to your preferred scrolling speed.
Quick Menu	Pick it up and you can use the key to pull up the Quick Menu. Detailed information for reference is down below this table.
Fixed Pressure Sensitivity	You can lock the pressure at the current level until you release the component. For example, if you assign this setting to a pen button, you can paint with pressure sensitivity enabled in your application until you reach the brush size you like. Then, press and hold the pen button to lock in that brush size as long as you are pressing and holding the button.
None	When select None, the keys will not work.

Note: The pictures are for reference only.

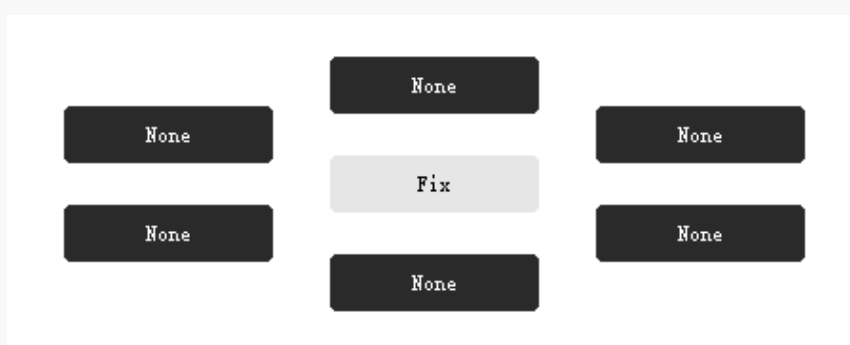
The specific settings of the Quick Menu are as follows:



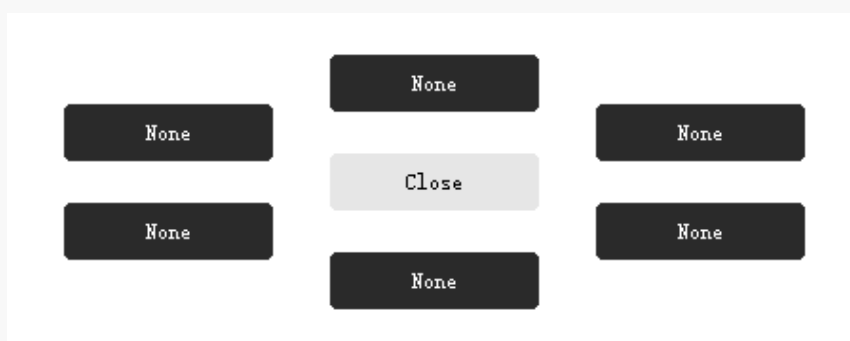
Click Customize in the picture above to call out a quick menu (see picture 1). For each of the six buttons on the left, users can enter a name for it and set unique function for it. After that, users can call up the Quick Menu by pressing the key (see picture 2). The menu disappears after a click on any of the six buttons. By clicking “Fix” once the menu will be fixed on the desktop while after a second try the “Fix” button changes to “Close” and the menu disappears (see picture 3). Put the cursor on the menu to drag it.



Picture 1



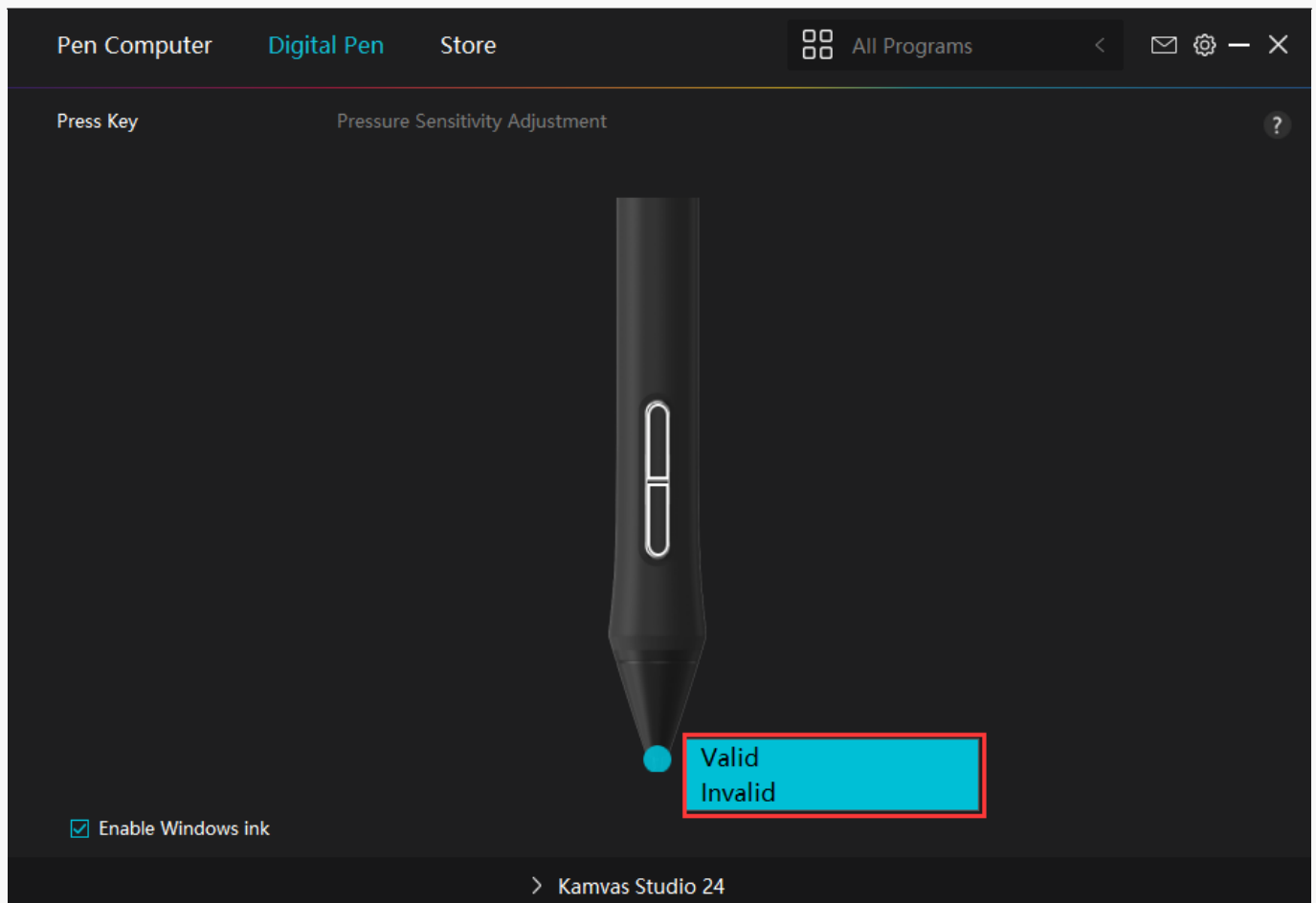
Picture 2



Picture 3

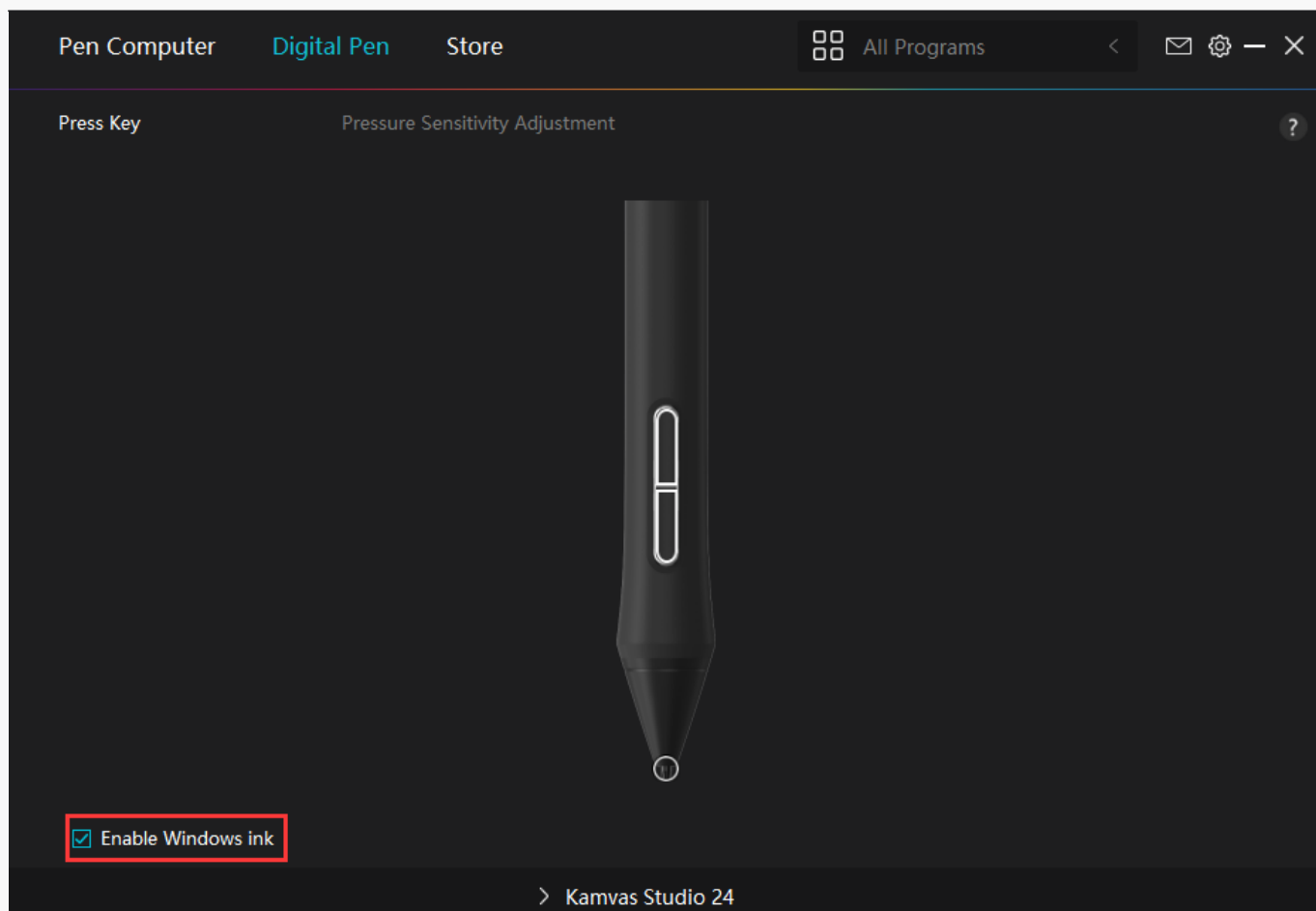
## 2. Pen Nib Activity

The pen nib of the digital pen can be set as Valid/Invalid according to users' needs. Click the drop-down button to set its activity. In Valid mode, the pen works well, and in Invalid mode, the pen has a cursor movement, but cannot complete specified actions.



### 3. Enable Windows ink

Microsoft Windows provides extensive support for pen input. Pen features are supported in such as Microsoft Office, Windows Whiteboard, Adobe Photoshop CC, SketchBook 6 and so on.



## 4. Pressure Sensitivity Adjustment

Users can adjust the pressure sensitivity level by dragging the slider in the Pressure Sensitivity Adjustment box according to your usage habits. Click the redo button at the top right to revert to the default pressure.

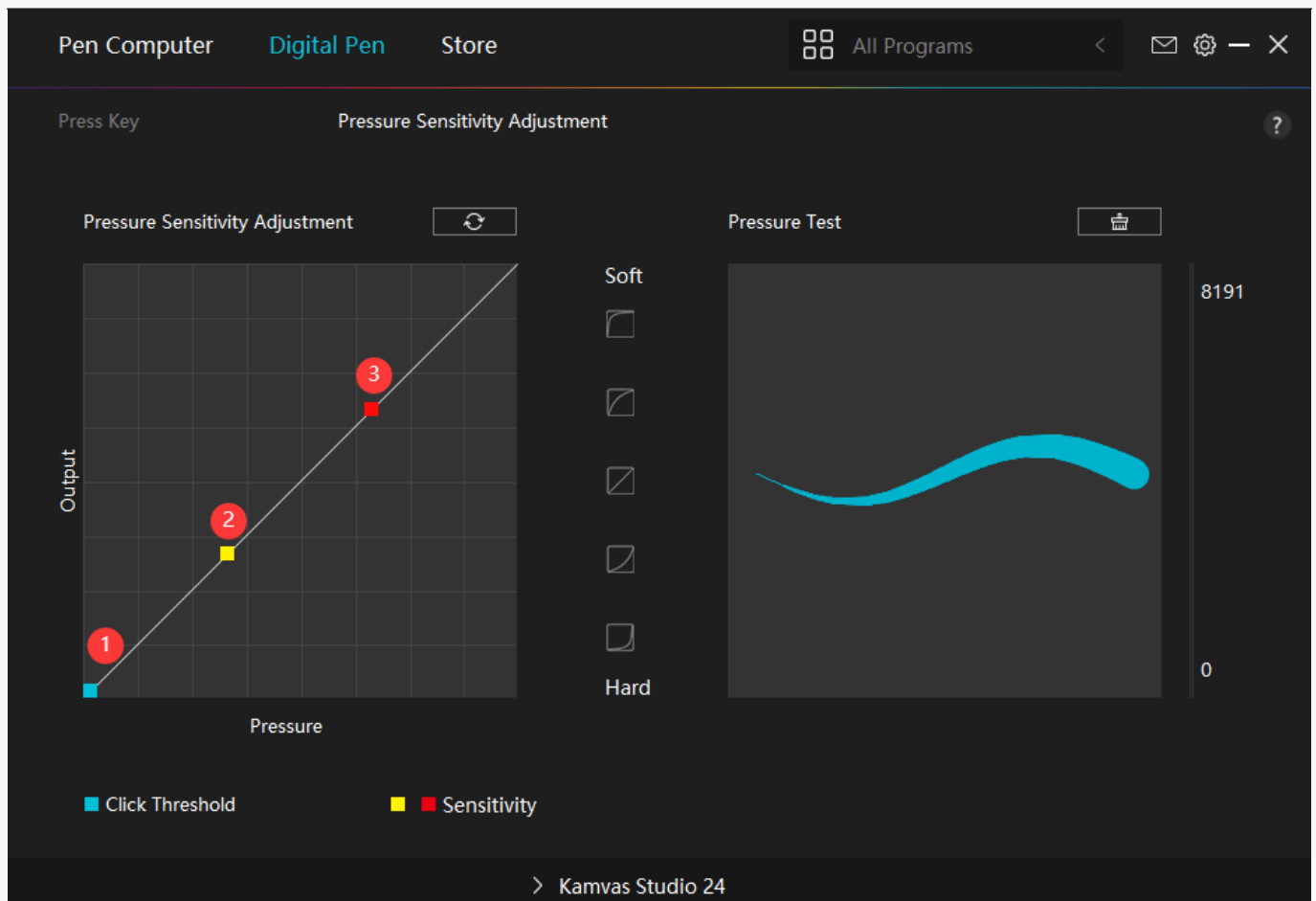
(1) To decide the force required for a pen to produce a click or a pressure sensation.

(2) You can change the slope of the pressure response curve.

(3) To determine how much pressure needs to be applied to the pen nib to reach the highest pressure sensitivity level.

\*Draw lines in the Pressure Test box with the pen, and the bar on the right will simultaneously show the pressure changes on the pen nib. Click the "Delete" button above to remove the lines, reset the pressure sensitivity level and test it until you find the appropriate pressure sensitivity level.

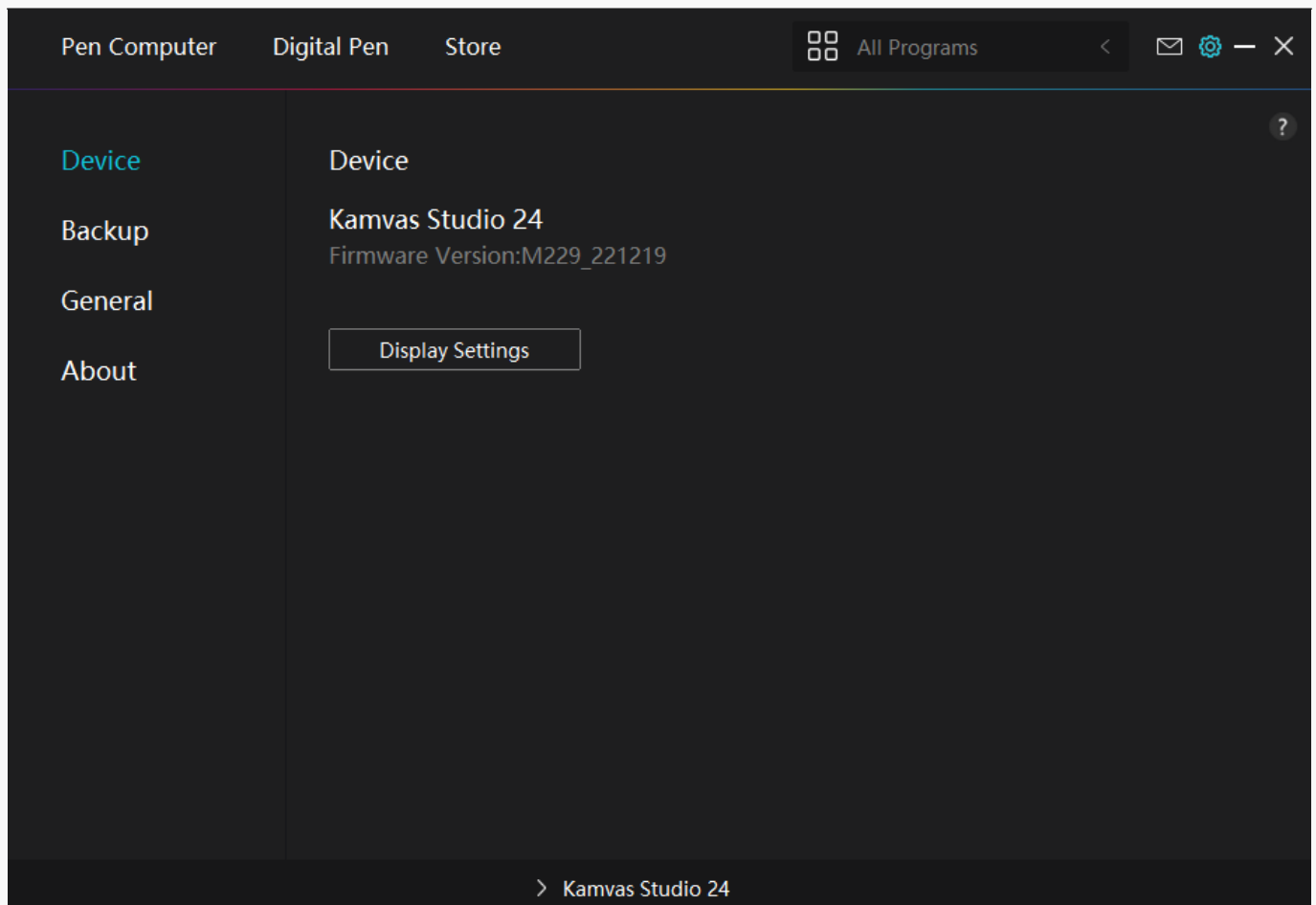
\*A steep curve means a more sensitive response.



Driver Setting

## 1. Device

Here you can view the product and firmware information.



\* Display Settings



Display Settings

×

Display

KS2401

Scene Mode

Standard Mode

Game Mode

Movie Mode

USER

Saturation

50

Color Setting

Color Temperature

Color Space

6500K

Default Setting

Display Settings

×

Display

KS2401

Scene Mode

USER

Brightness

50

Contrast Ratio

50

Saturation

50

Color Setting

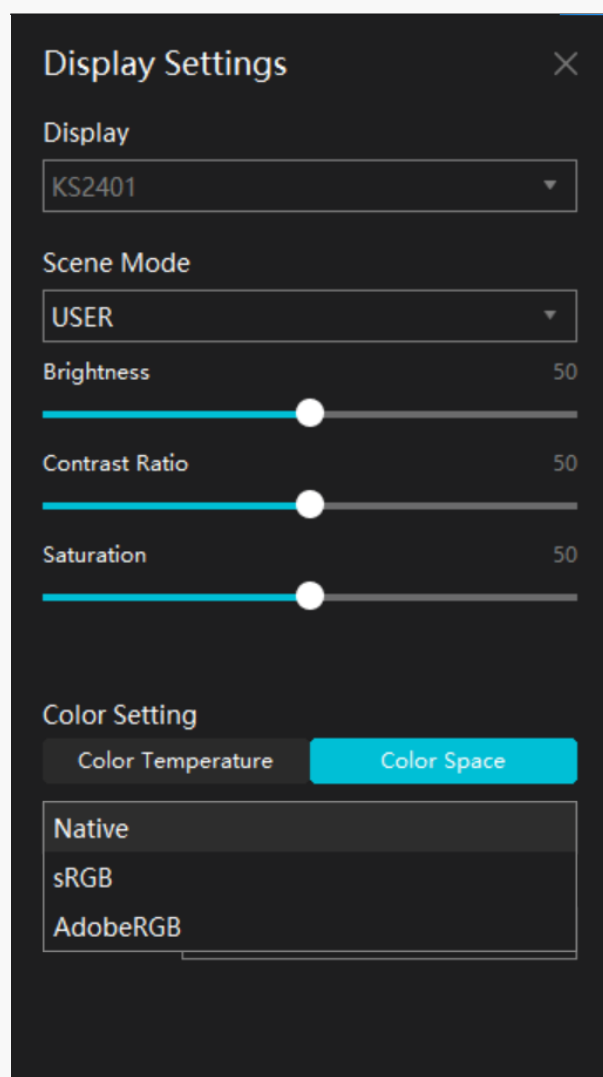
Color Temperature

Color Space

6500K

9300K

Custom Color



Scene Mode: "Standard Mode", "Game Mode", "Movie Mode" and "USER" can be selected.

Brightness: You can drag the corresponding slider to adjust the brightness of the screen.

Contrast Ratio: You can drag the corresponding slider to adjust the contrast ratio of the screen.

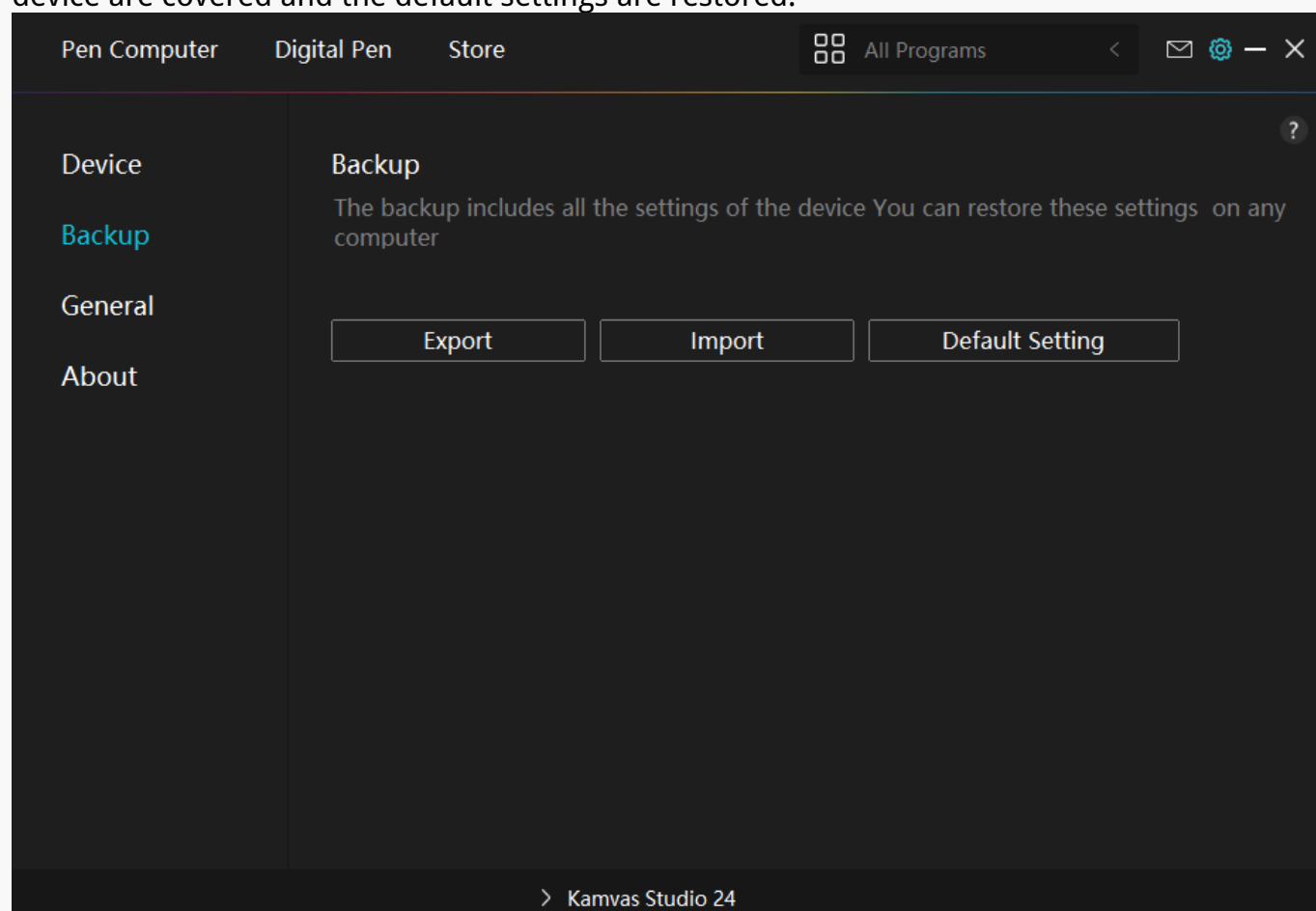
Color temperature: "6500K", "9300K" or "Custom Color" mode can be selected. In "Custom Color" mode, color temperature can be customized by adjusting RGB value.

Color space: "Native", "sRGB", "AdobeRGB" can be selected. In Native color space, "Brightness", "Contrast Ratio" and "Saturation" can be freely adjusted or selected.

While in sRGB and Adobe RGB color space, to ensure that the standards of the two color spaces can be met as far as possible, only "Brightness" in "USER" mode can be adjusted.

## 2. Backup

The driver can import and export your custom settings, which helps to avoid repeated settings when launching a different device. Default settings mean that all the settings on current device are covered and the default settings are restored.



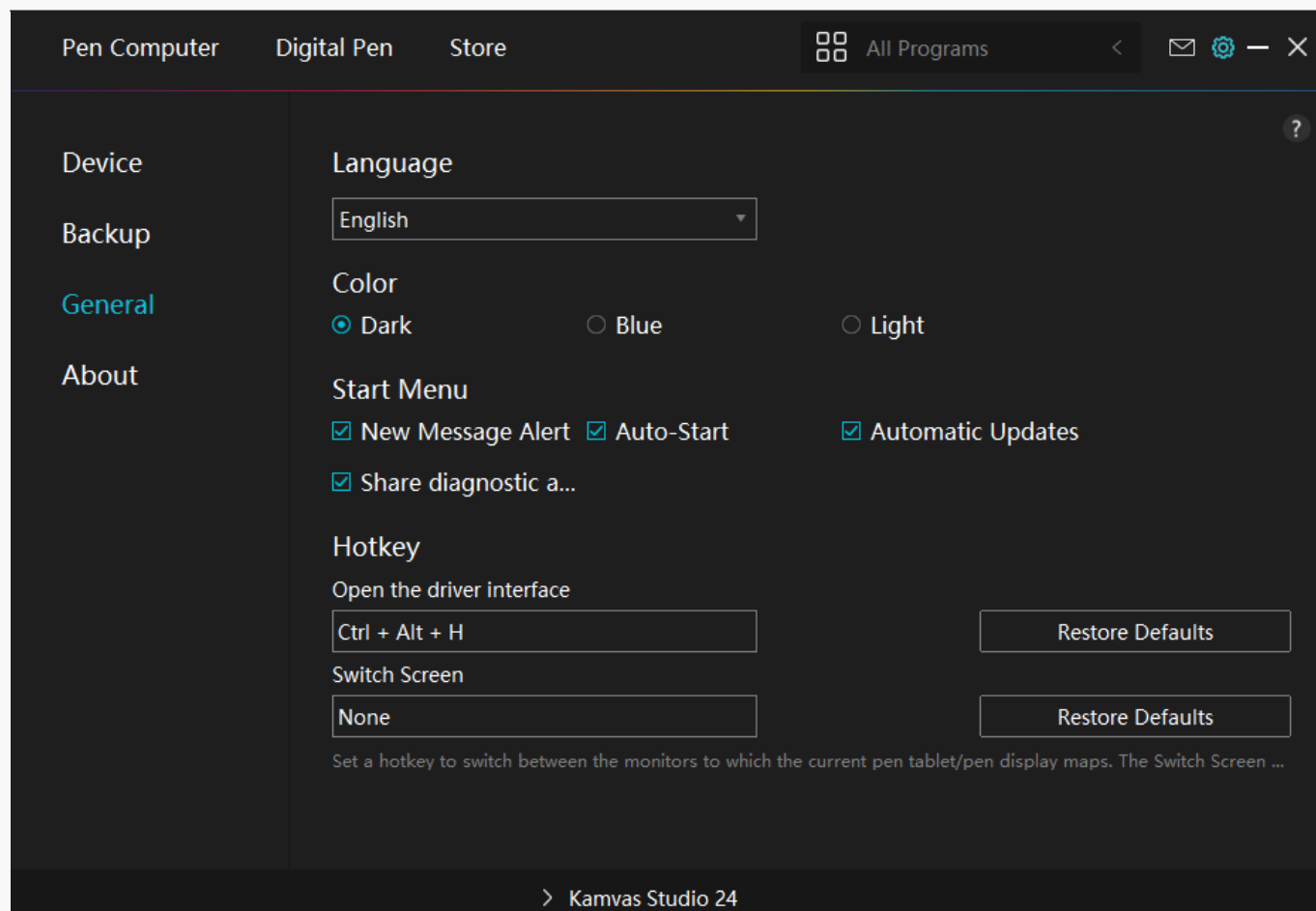
## 3. General Setting

Language: Click the drop-down button to select a language.

Color: You can select the color of the Driver interface among Dark, Blue, and Light according to your preference.

Start Menu: Click to enable or disable "Auto-Start", "New Message Alert", "Automatic Updates", "Low Battery Warning".

Hotkey: You can set a hotkey to call out the Driver interface quickly according to your usage habits.



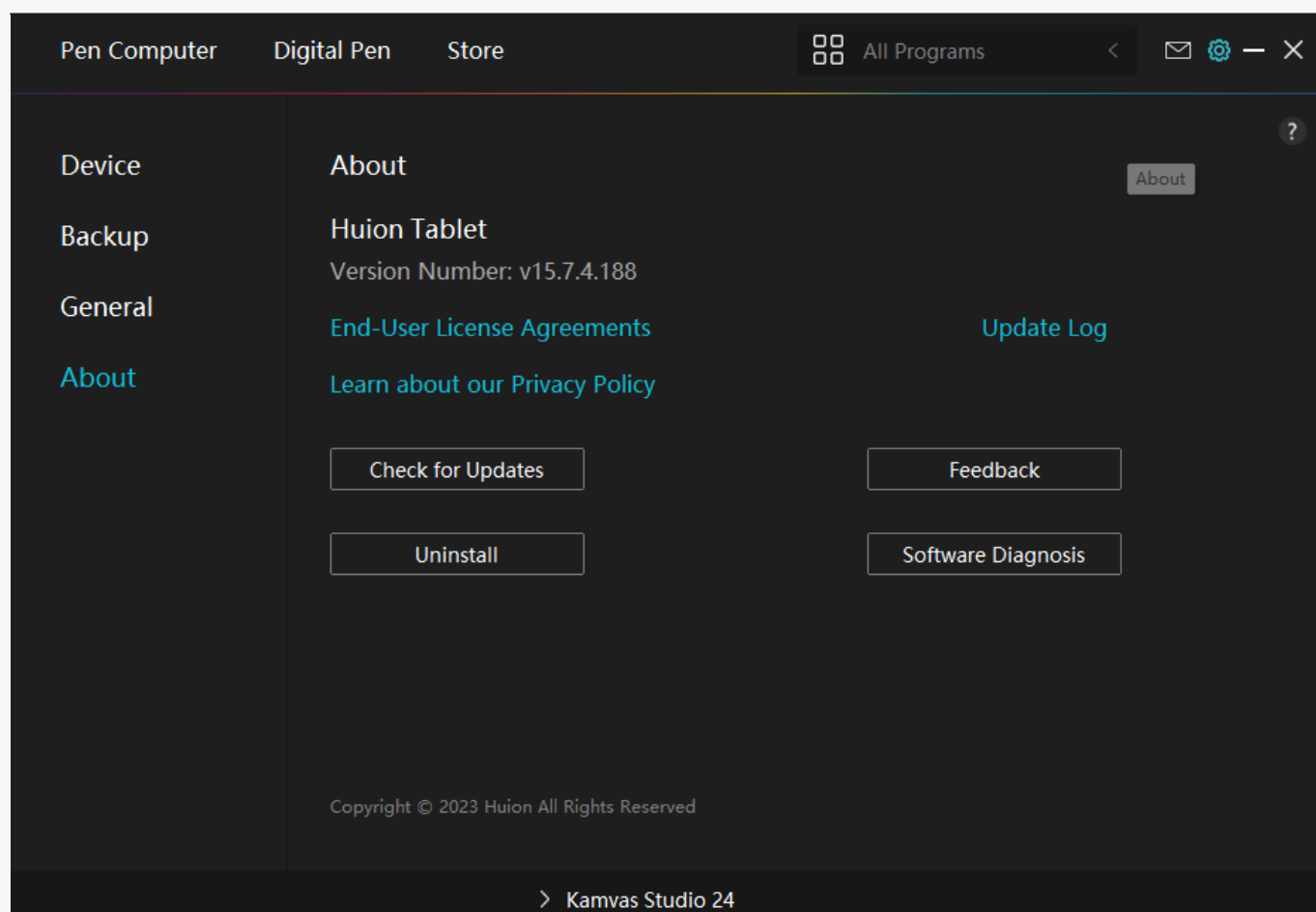
## 4. About

Users can check the Driver version here. Click "Check for Updates" to find the latest Driver version and then follow the prompts to update the Driver if needed.

Click "Feedback" to send a feedback email if you have any question about the driver;

Click "Uninstall" to delete the current driver.

If you can't click or draw or there is no pressure sensitivity under the software, click "Software Diagnosis" to find out cause. For specific operation, Please click [here](#).



## How to Use the Digital Pen

### Hold the Pen:

Hold the digital pen as you hold a real pen. Adjust your grip so that you can toggle the pen press keys easily with your thumb or index finger. Be careful not to accidentally press the key while drawing with the pen.

Note: Please place the pen on the table when it is not in use. Do not put the pen on the pen computer, otherwise it may interfere with the function of the mouse and other devices, and it may also prevent your computer from entering sleep mode.

### Cursor Movement:

Move the pen slightly above the working area of the pen computer without touching the surface of the pen computer, and the cursor on the screen will move to the new position accordingly.

### Click:

Tap on the working area of the pen computer with the pen to register a click. Press lightly to highlight or select an item on the screen and double-click to open it.

## Move:

Pick up a file or icon, then slide the pen nib across the display to move it.

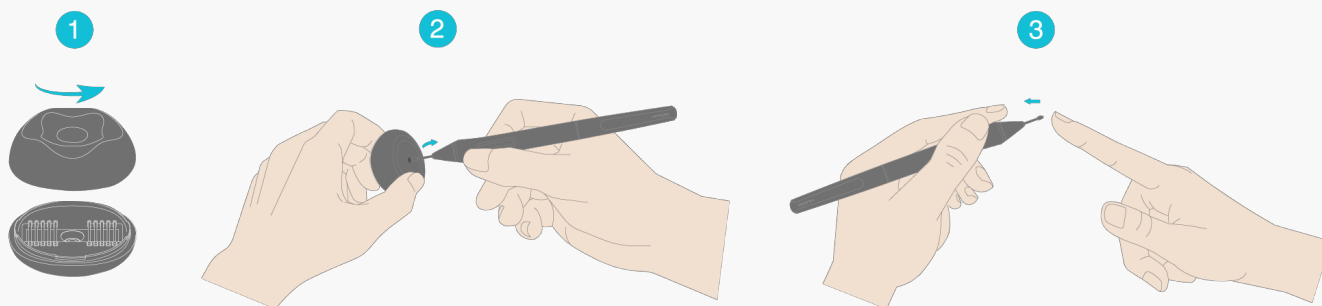
## Use the Pen Press Keys:

There are two press keys on the digital pen. Their functions can be programmed in the driver. The pen press keys will work as long as the vertical distance between the pen nib and the pen computer is within the sensing height(10mm).

## Replace the Pen Nib:

Tip: When the pen nib is badly worn, please replace it with a new pen nib timely.

1. Rotate the pen holder counterclockwise and take out a replacement nib.
2. Tilt the pen, and pull the nib out of the pen through a nib clip.
3. Insert the replacement nib straight into the barrel of the pen until the nib stops moving forward.



## Troubleshooting Solutions

### Pen Computer Troubleshooting

Problems	Solutions
The power indicator light does not work	<ol style="list-style-type: none"> <li>1. Check whether the power supply has been connected.</li> <li>2. Check the socket and the power cord.</li> <li>3. Check whether the adaptor switch has been switched on.</li> </ol>
There is no picture on the screen	<ol style="list-style-type: none"> <li>1. Check whether the power has been turned on.</li> </ol>

	<p>2. Check whether the adaptor's indicator light is on. The indicator light which is not on represents that there is no signal. In this case, please restart the computer or reconnect.</p> <p>3. If the signal is interrupted or unstable, please check the signal source.</p>
The pen touch does not respond	<p>1. Check whether the driver has been successfully installed. Try to reinstall the driver and restart.</p> <p>2. Check whether the digital pen nib is set as "enabled". If not, please reset it as "enabled".</p>
It takes too long for the pen touch to respond	<p>1. The CPU is occupied by programs or too many processes are running. Try to close applications which are not used temporarily.</p> <p>2. There is debris on the screen which affects the operation. Try to clean the screen of the pen computer.</p>
Color deviation	As color temperature varies for different areas, tiny color deviation is a normal phenomenon.
Image dithering or ripple	Check whether there is any electronic device nearby that interferes with the pen computer.
Image blur	Please set the screen resolution to the default setting.

If your problem is not resolved, please click [FAQs](#) to view more troubleshooting methods or email us ([service@huion.com](mailto:service@huion.com)).

#### Digital Pen Troubleshooting

Problems	Solutions
The pen computer cannot sense the pen pressure while the cursor can move	<p>1. If the driver is damaged or incorrectly installed, please uninstall the driver and reinstall.</p> <p>2. Try to restart your computer.</p>
The digital pen does not work.	<p>1. Make sure you are using the pen that originally came with the pen computer.</p> <p>2. Make sure you installed the driver correctly.</p>
The press key does not work.	<p>1. Check whether the press key function in the driver is enabled.</p> <p>2. Check whether the function of the press key is set correctly.</p>
The computer cannot enter sleep mode.	Please do not place the digital pen on the working area of the pen computer when



	you are not using it, otherwise your computer will not be able to enter sleep mode.
The press key of the digital pen does not work.	The press keys of the digital pen will not work when the vertical distance between the pen nib and the working area or the surface of the working area of the pen computer is over 10mm.
The cursor has an error.	Recalibrate

If your problem is not resolved, please click [FAQs](#) to view more troubleshooting methods or email us([service@huion.com](mailto:service@huion.com)).