

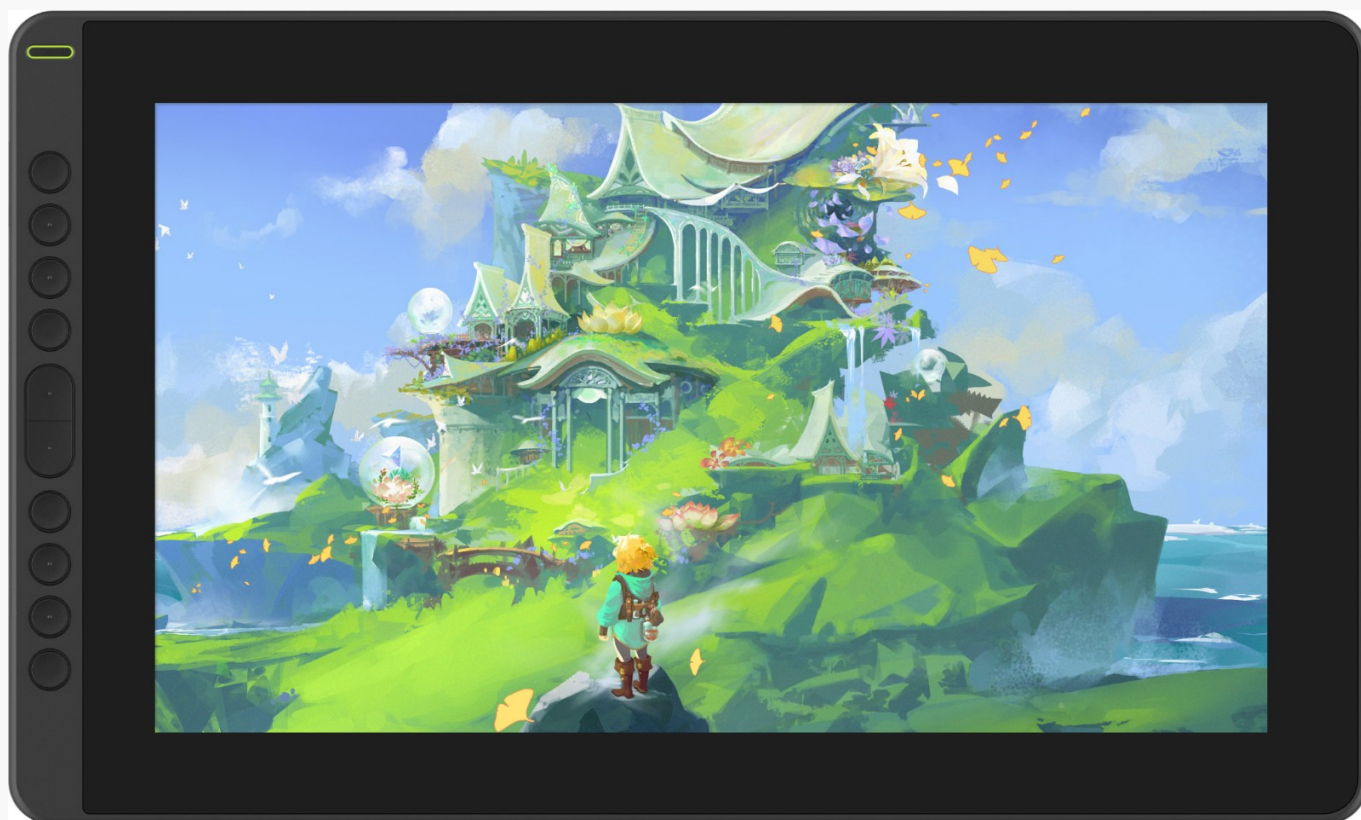
---

## Contents

Product Overview	2
Display Introduction	2
Product and Accessories	2
Product Connection	4
Driver and Setting	6
Install Driver	6
Driver Interface Preview	8
Pen Display Setting	10
Digital Pen Setting	19
Driver Setting	22
Digital Pen Basic Operation	27
Specifications	28
Troubleshooting Solutions	30

## Product Overview

### Display Introduction

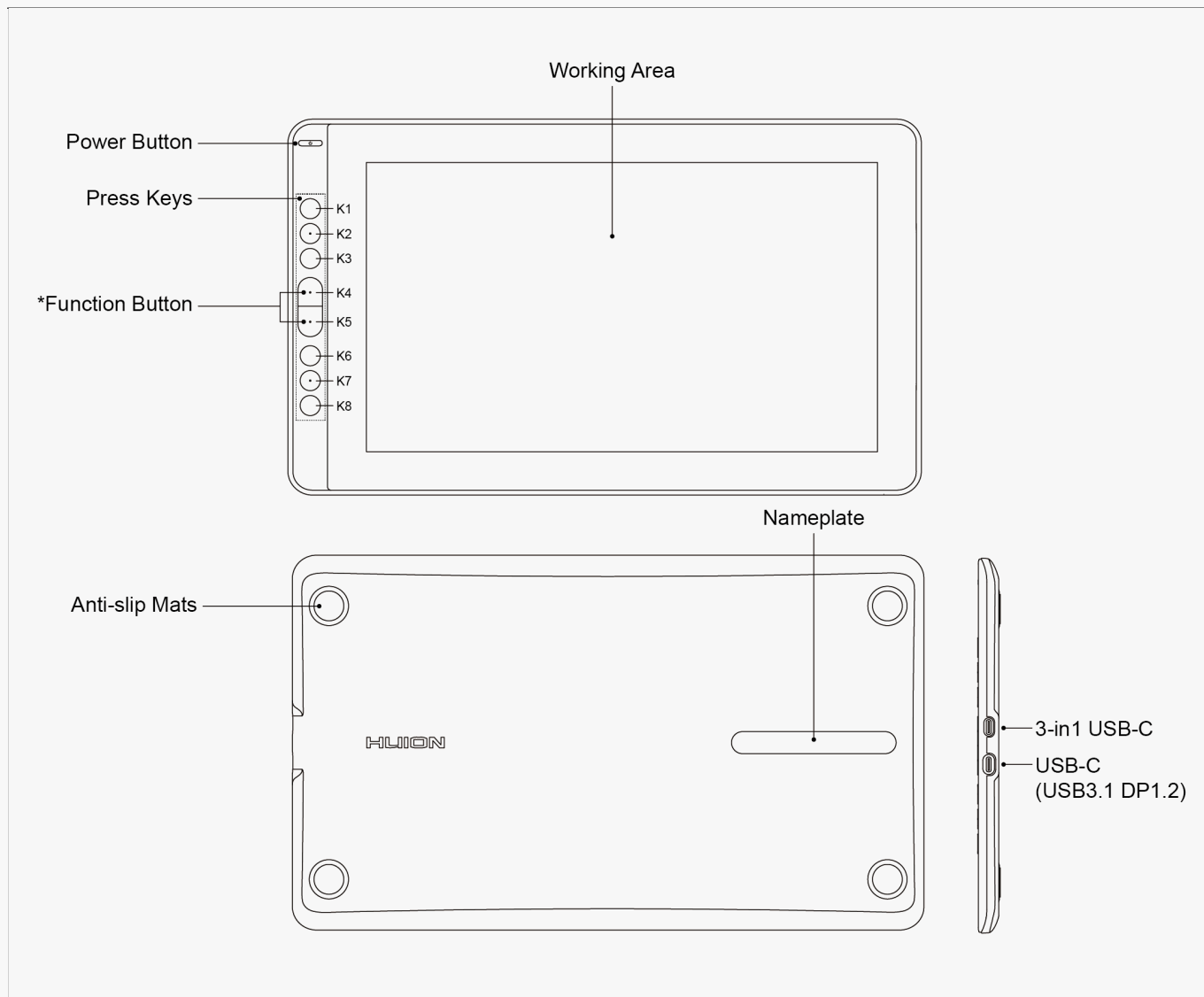


Thanks for choosing HUION KAMVAS RDS-160 creative pen display. This is a new generation of professional drawing display, which can greatly improve your work efficiency of painting and creation, and full of fun. You can freely painting and writing, depicting different lines and colors, just as the pen writes on the paper, which brings you a real shock experience. To give you a better understanding and using of your tablet, please read this user manual carefully. The user manual only shows the information under Windows, unless otherwise specified, this information applies to both Windows and Mac systems.

Note: The pictures in the User Manual are for reference only.  
Product and Accessories

## Product Overview

Please see the detailed product introduction.



\*Function Button: Press K4 & K5 around three seconds to open the OSD menu, meanwhile the indicator will flash green. The function of K2 K3 K6 K7 will become OSD function.

K2 [AUTO]: Before entering menu, its function is "auto adjustment".  
After entering menu, its function is "back to previous menu".

K3 [MENU]: Press to call up the menu, after entering menu, its function is "confirm".

K7 [-]: After entering menu, its function is "down/left/decrease".

K6 [+]: After entering menu, its function is "up/right/increase".

\*Press K4 & K5 again for around three seconds until the OSD menu disappears, the function of K2 K3 K6 K7 will become shortcuts function again.

## Accessories

---

After unboxing your package, make sure that you have the following items:

Pen Display\*1

Digital Pen\*1

3-in-1 Cable\*1

USB Extension Cable\*1

USB-C to USB-C cable\*1

USB Power cable\*1

Power Adapter\*1

Foldable Stand\*1

Pen Holder\*1

Pen Nib\*10

Pen Nib Clip\*1

Glove\*1

Cleaning Cloth\*1

Quick Start Guide\*1

## Product Connection

RDS-160 supports both computers and Android devices. The following are ways of connection for reference.

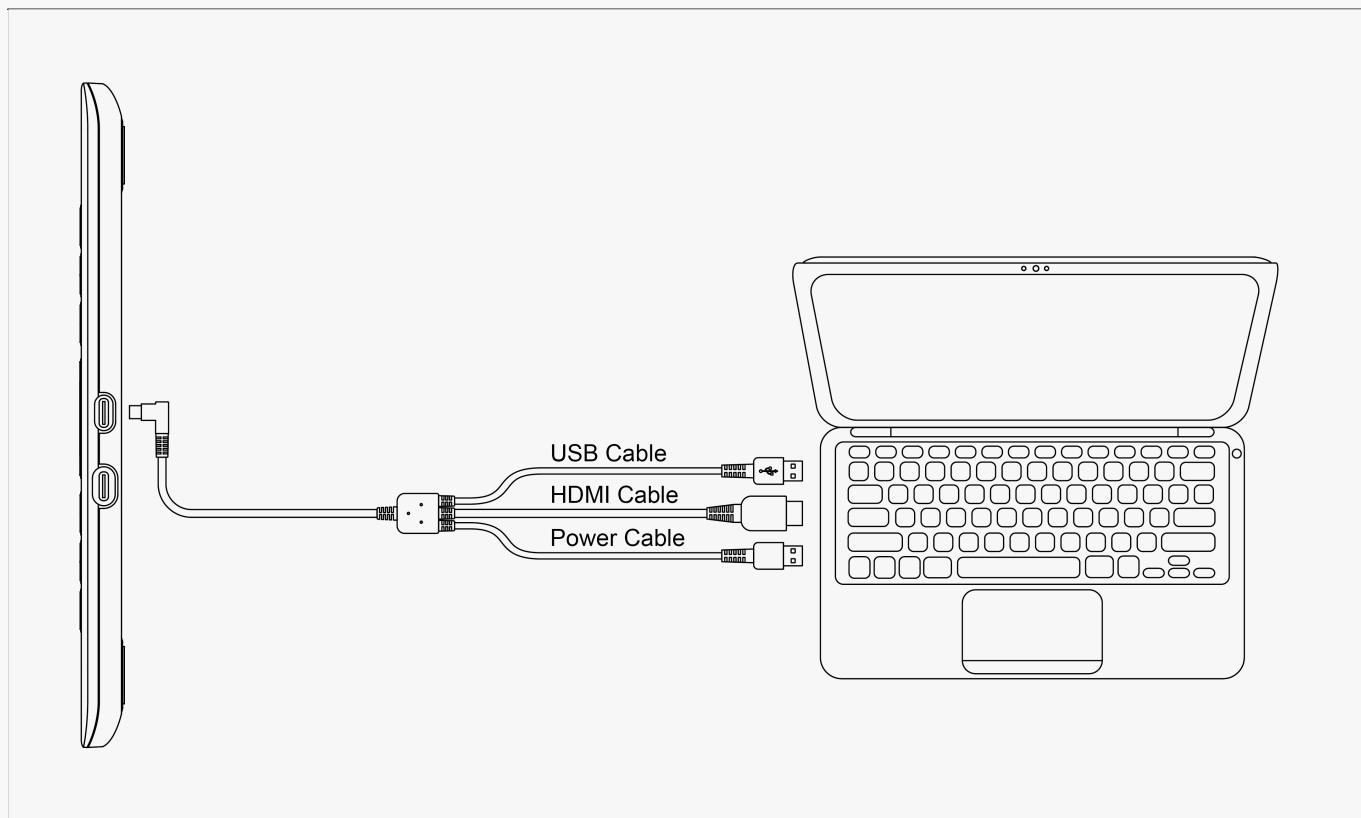
### 3-in-1 Type-C Cable

Connect the pen display to your computer with 3-in-1 Cable.

- ① Connect the display to your computer with 3-in-1 cable;
- ② Connect the power adapter to the power cable.

\*

The extended cable helps to connect the display to the power supply if the power cable is too short. Any USB power adapter is usable as long as the out voltage is 5V, 2A.



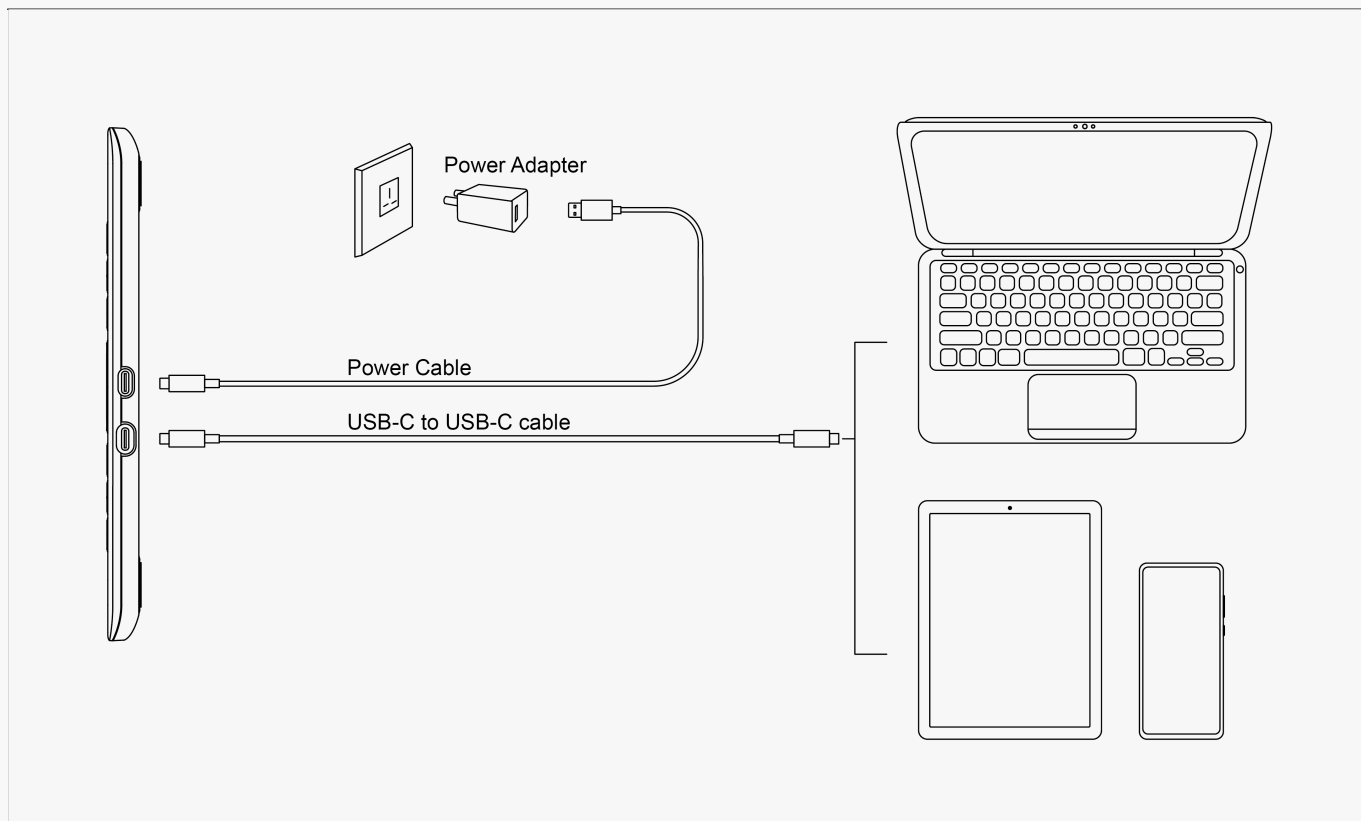
## Connect via a Full-featured USB-C to USB-C Cable

Connect the display to your computer or Android device with USB-C to USB-C cable.

- ① Connect the display to your computer or Android device with USB-C to USB-C cable.
- ② Connect the power adapter to the power cable.

\*

Users can buy a full-featured USB-C to USB-C cable or a power cable separately, but make sure the former supports at least USB3.1 GEN1 data transfer protocol & DP1.2 and the power supply is at least 5V, 2A.



## Driver and Setting

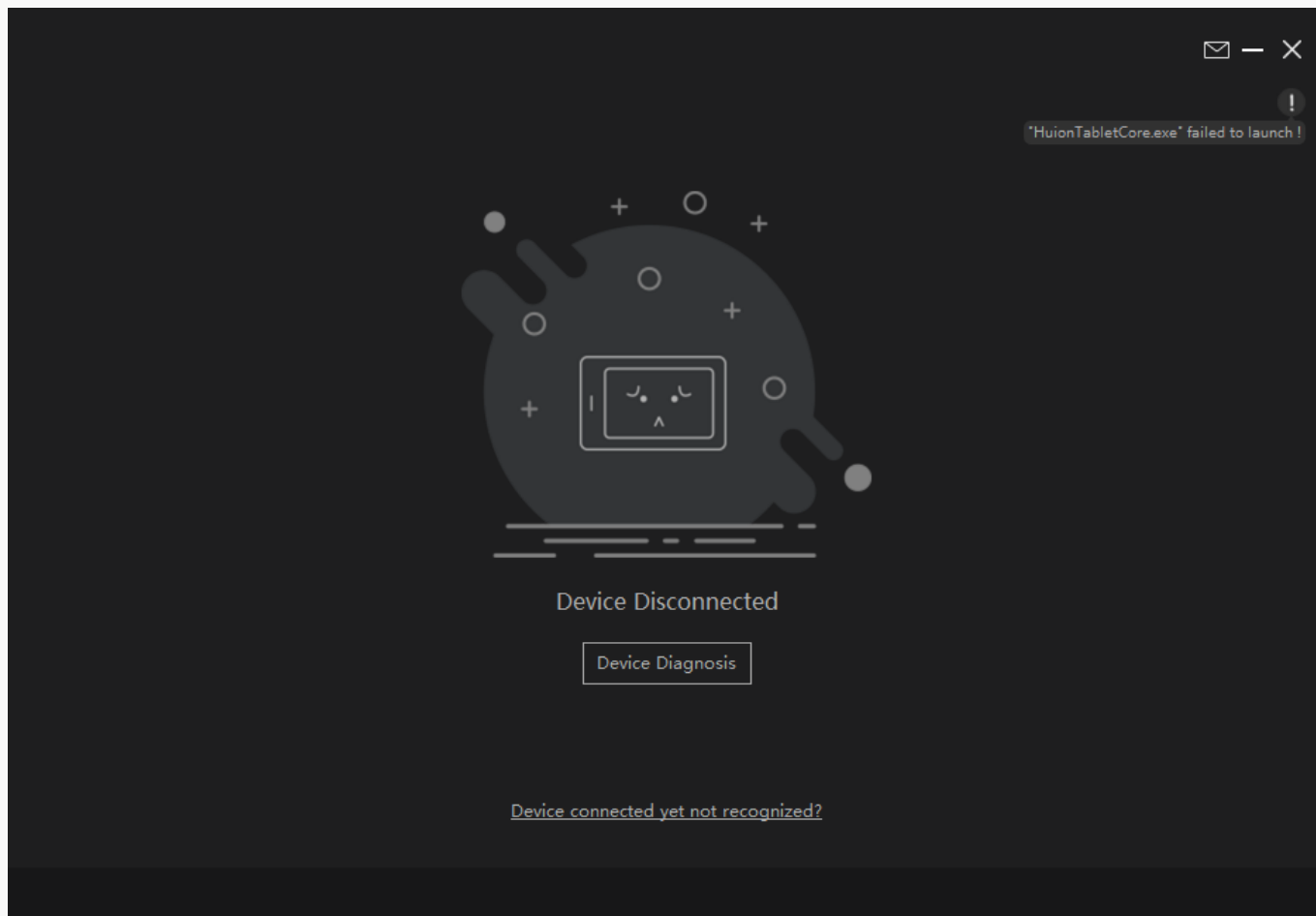
### Install Driver

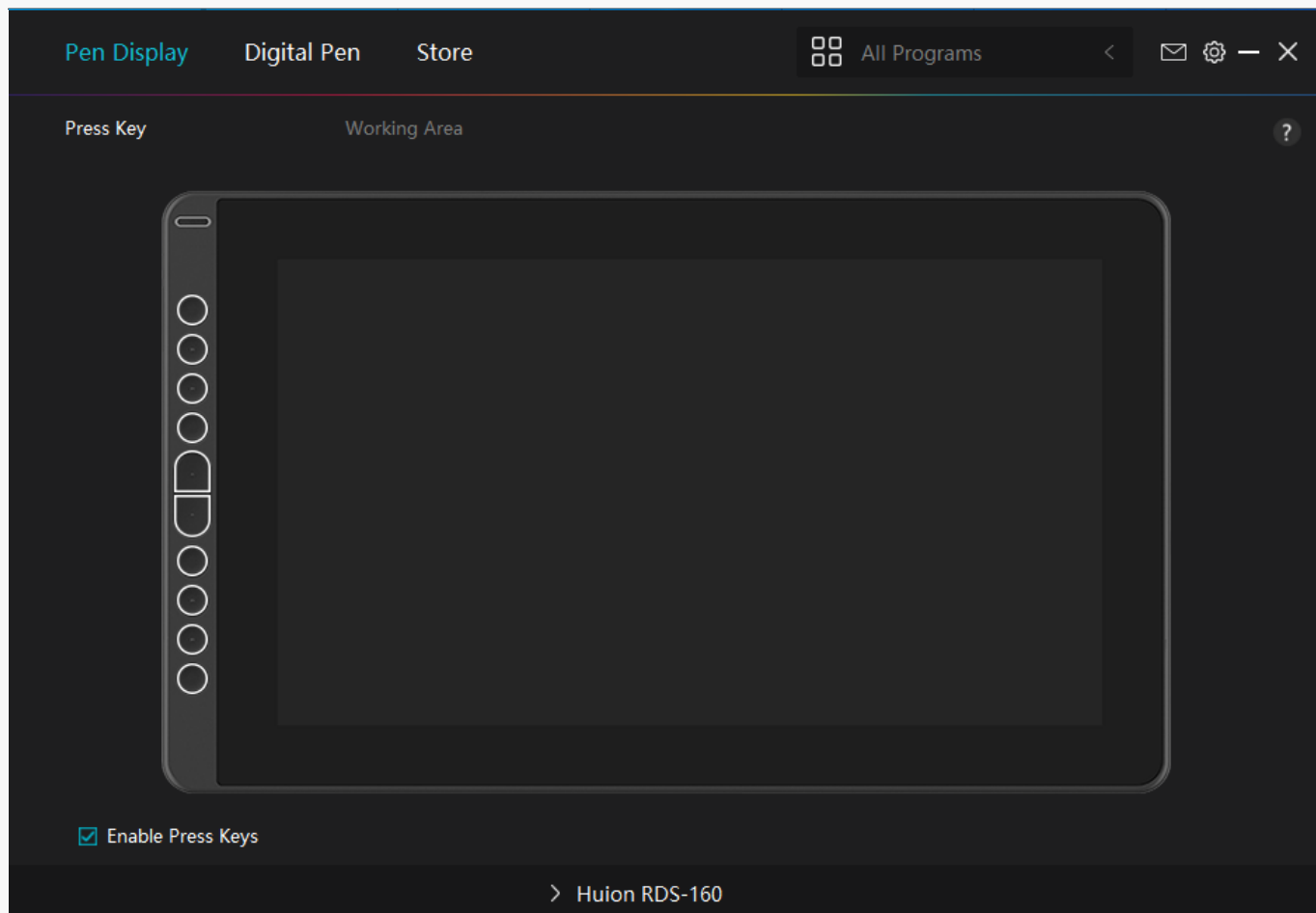
1. Please choose the correct driver for your device from our website: [Driver-RDS-160](#).
2. Click Driver-RDS-160 to download it.
3. Follow the instructions to complete the installation.

### Note:

- ① Before installing the driver, please close all graphic software and antivirus programs. The note ("HuionTabletCore.exe" failed to launch!) below appears only on devices with Windows OS, indicating that the driver is blocked by antivirus programs or drawing apps.
- ② If you have installed a Driver 15 of Huion's product, it's unnecessary for you to install it again. Because RDS-160 is compatible with any Driver 15.
- ③ Please make sure your computer operating system is Windows 7 or later/mac OS 10.12 or later.
- ④ Open the driver and a picture of RDS-160 will appear, indicating that the pen display is successfully connected to your computer. Now you can use your pen display.
- ⑤ If the connection fails, please restart the driver or your computer.

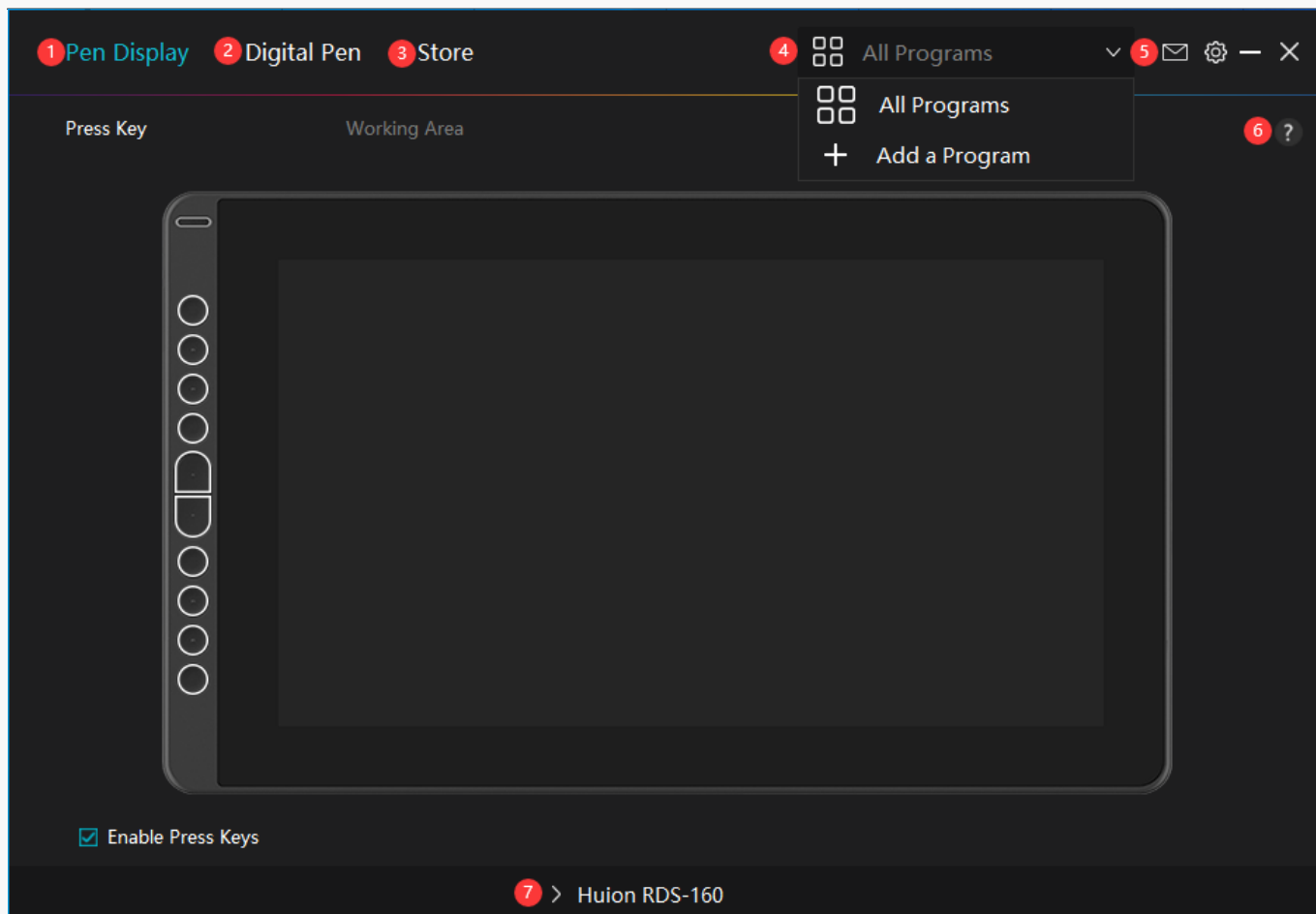
Note: The pen display cannot work once the driver is uninstalled or deleted. In this case please click Driver-[RDS-160](#) to reinstall a driver and your pen display and digital pen will restore to their default settings.





### Driver Interface Preview





## 1. Pen Display

On the “Pen Display” interface, Users can set functions of the display, including Press Key and Working Area Set.

[See Section](#)

## 2. Digital Pen

Users can set functions of the pen on this “Digital Pen” interface, including Press Key, Mode selection, Pressure Sensitivity Adjustment, and Pressure Test.

[See Section](#)

## 3. Store

Huion Store is where you can get the latest information about the product such as its FAQ or sales promotion. In addition, you can also purchase Huion’s other products or accessories here.

---

## 4. Add Programs

1. Some programs which have already been opened will appear for you to choose from after clicking Add a Program on the screen. For more programs, click Browser and choose the item that you want to get it added.
2. You can set different functions for different programs. Functions of the press keys change automatically as you switch from one program to another.
3. When you select "All programs", the functions of press keys that you set are valid for every program. By clicking Add a Program from the drop-down list, you can set the functions for a specific program and hence have unique settings for different programs. After that, when you launch a specific program, the Driver will automatically recognize it and the setting features will change to its corresponding ones.

## 5. Setting

Users can set the functions of a driver on this interface, including check out Device information, Backup setting, General setting, and its version.

[See Section](#)

## 6. Common Problems

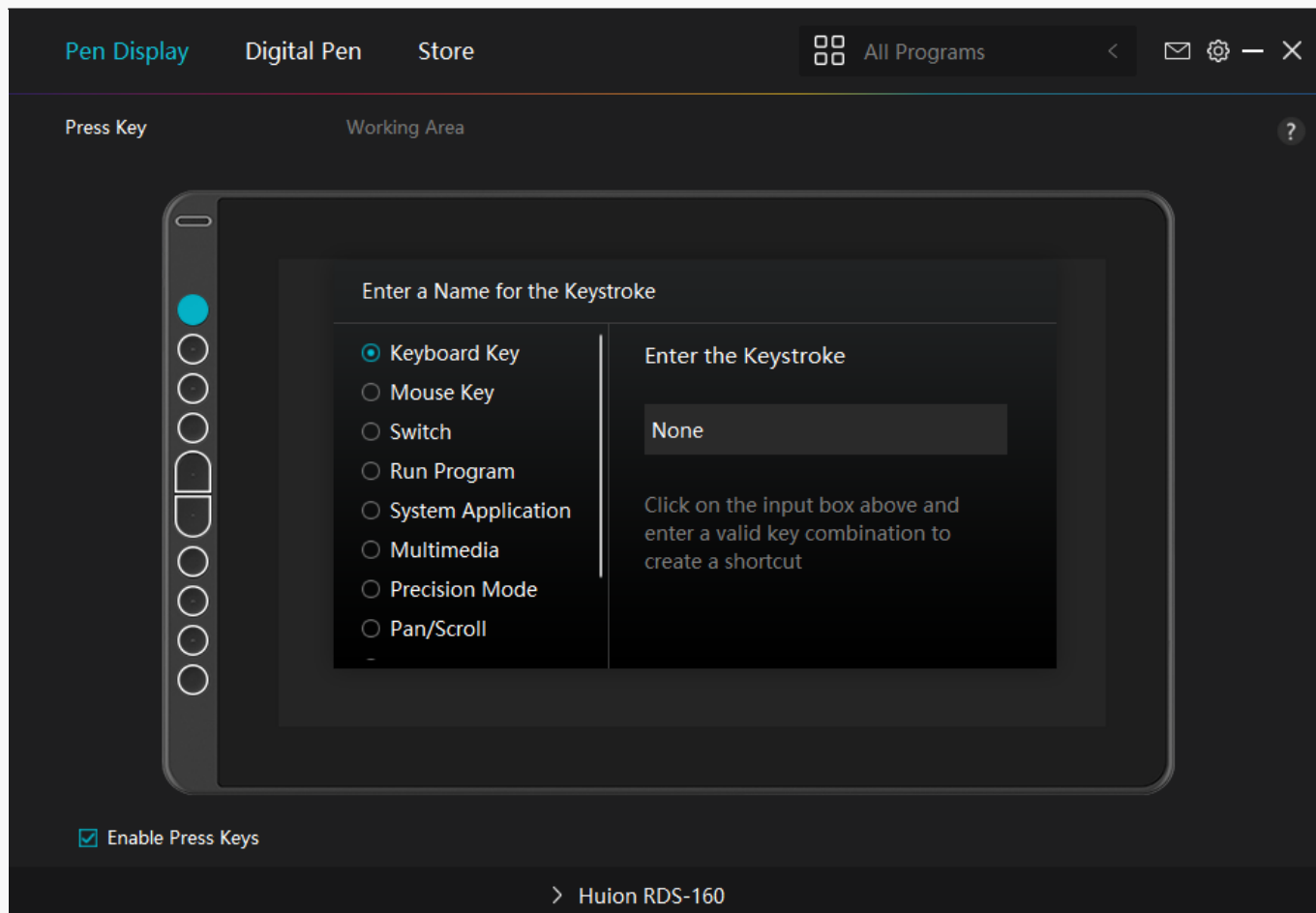
Click "?" and jump to Forum in our website <https://support.huion.com/en/support/home> to get a user manual or feed back the problems to us.

## 7. Switch between Devices

The Driver is able to support two devices at most. Functions of them can be customized by users respectively. When switch to one of them, functions change to its corresponding ones.  
Pen Display Setting

### Press Key

You can customize the functions of these press keys according to your own habits, and you can uncheck "Enable press keys" in the lower left corner to turn off these functions. Place the cursor over one of the buttons on the screen of your computer to check its default value. Click a button and then a pop-up dialog box appears. Choose what you want and set its function.

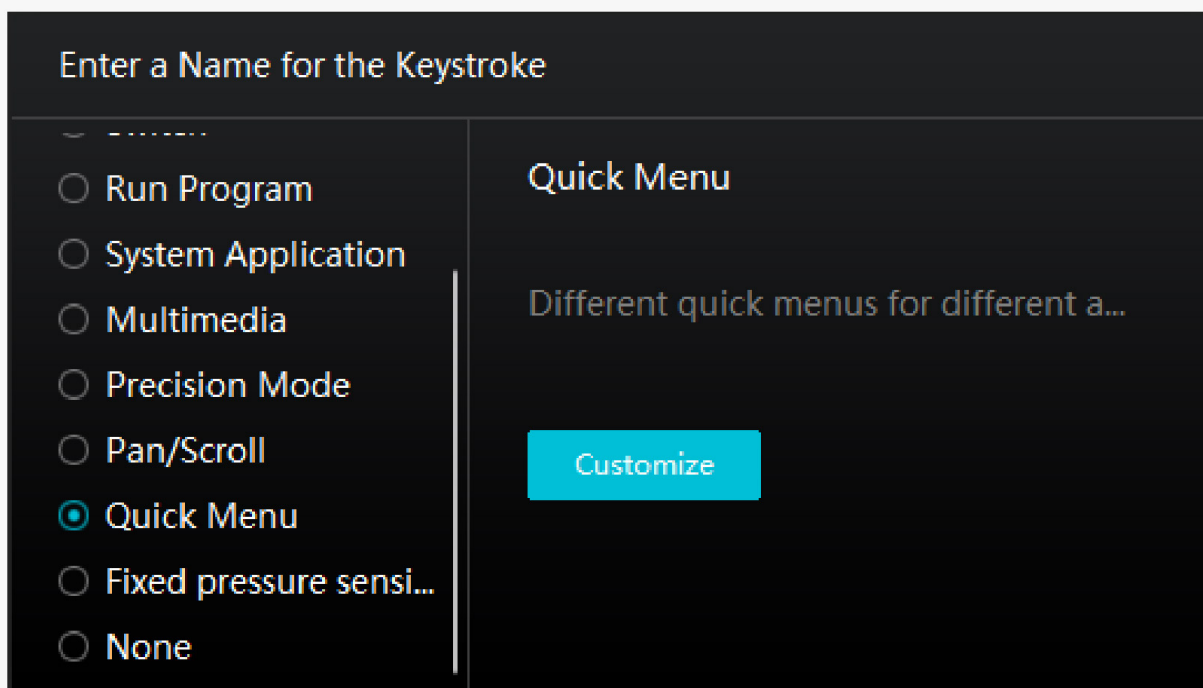


Refer to this table of settings below to help you decide if you want to change the existing settings.

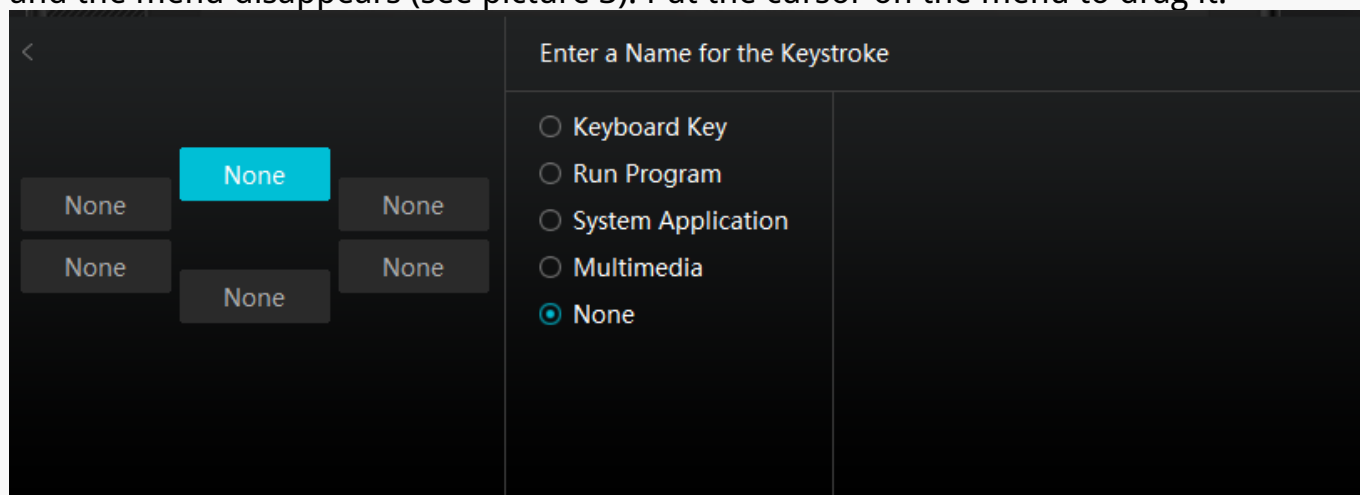
Note: The performance of functions in the table below is up to the device that users have connected.

Keyboard Key	Click on the input box above and enter a valid key combination to create a s
Mouse Key	Select the functions of a Mouse or Wheel. Please see the picture below for d Button, Right Button, Middle Button, and Double-left Click. Wheel: Wheel Fo Alt, Shift, and Win .
Switch	Select among Switch Screen, Switch Brush.
Run Program	Click Browse and select the program that you want to run quickly. After that
System Application	You can apply these functions to press keys: Lock the Screen, Sleep, Power (
Multimedia	You can apply these functions to press keys: Previous Song, Next Song, Play
Precision Mode	You can toggle between normal precision and a precision that you choose, t window that appears, move the slider to set the precision that you toggle in pen button, when you press the pen button, you switch to working in the pr press the pen button again, you switch back to working in the normal precis
Pan/Scroll	This function allows you to pan and scroll in a document or item by moving select Pan/Scroll, the Scroll Speed window appears. Move the slider to your
Quick Menu	Pick it up and you can use the key to pull up the Quick Menu. Detailed infor
Fixed Pressure Sensitivity	You can lock the pressure at the current level until you release the compon button, you can paint with pressure sensitivity enabled in your application u and hold the pen button to lock in that brush size as long as you are pressin
None	When select None, the keys will have no function.

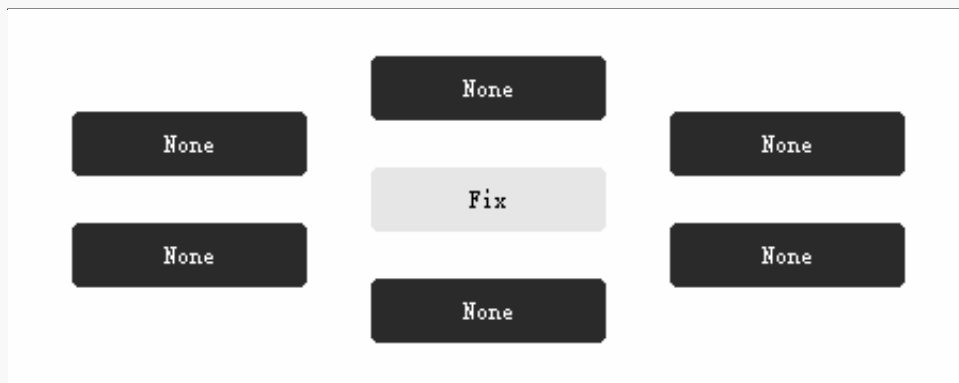
Note: The pictures are for reference only.



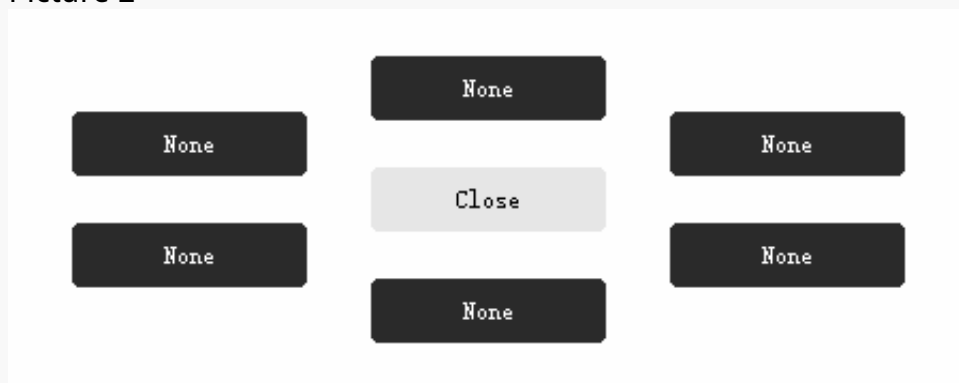
of the six buttons on the left, users can enter a name for it and set unique function for it. After that, users can call up the Quick Menu by pressing the key (see picture 2). The menu disappears after a click on any of the six buttons. By clicking "Fix" once the menu will be fixed on the desktop while after a second try the "Fix" button changes to "Close" and the menu disappears (see picture 3). Put the cursor on the menu to drag it.



Picture 1



Picture 2



Picture 3

## Working Area

Select the Working Area tab to define the relationship between pen movement on the device and cursor movement on the monitor screen.

By default the entire active area of device maps to the entire monitor. If more than one monitor is in use and you are in extended mode, you need to choose the related monitor on the driver interface which you are going to map to.

If your monitors are in mirror mode (All monitors display the same content), the device maps to the entire space on each monitor and the screen cursor is displayed on each monitor simultaneously.

### 1. Working Area Setting

Define the device area that will be mapped to the screen area.

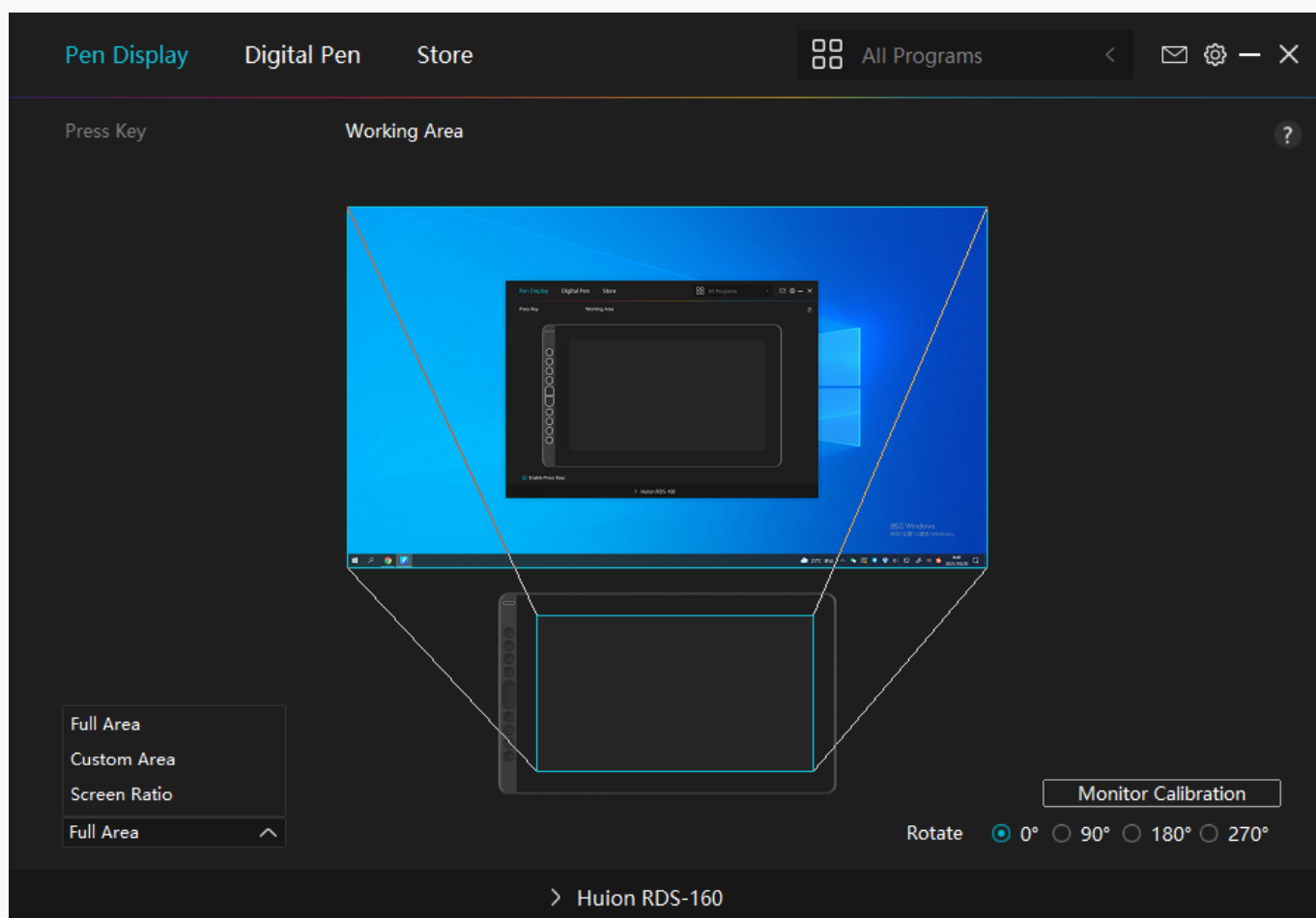
[1] Full Area: the entire active area of the device. This is the default setting.

[2] Screen Ratio: As a general rule, be 16:9.

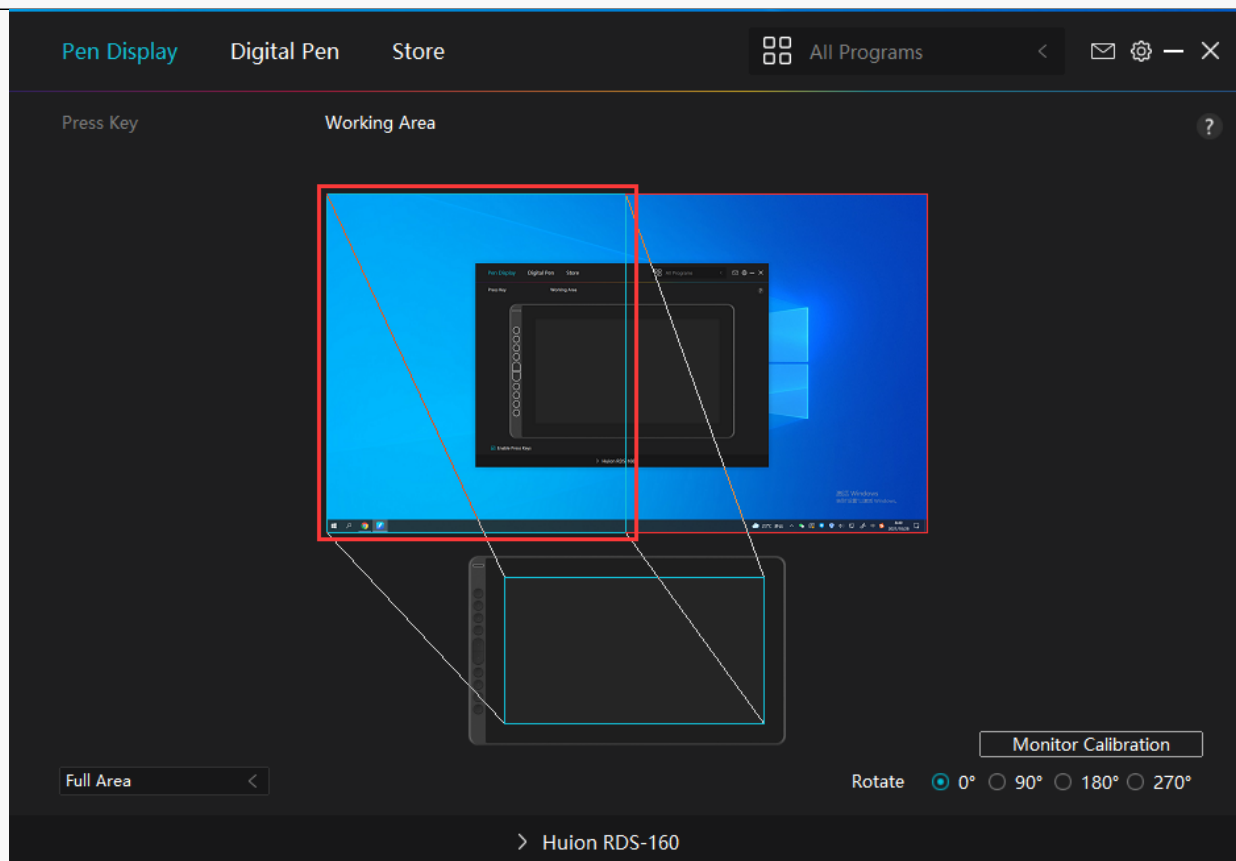
[3] Customized Area:

1> Enter coordinate values.

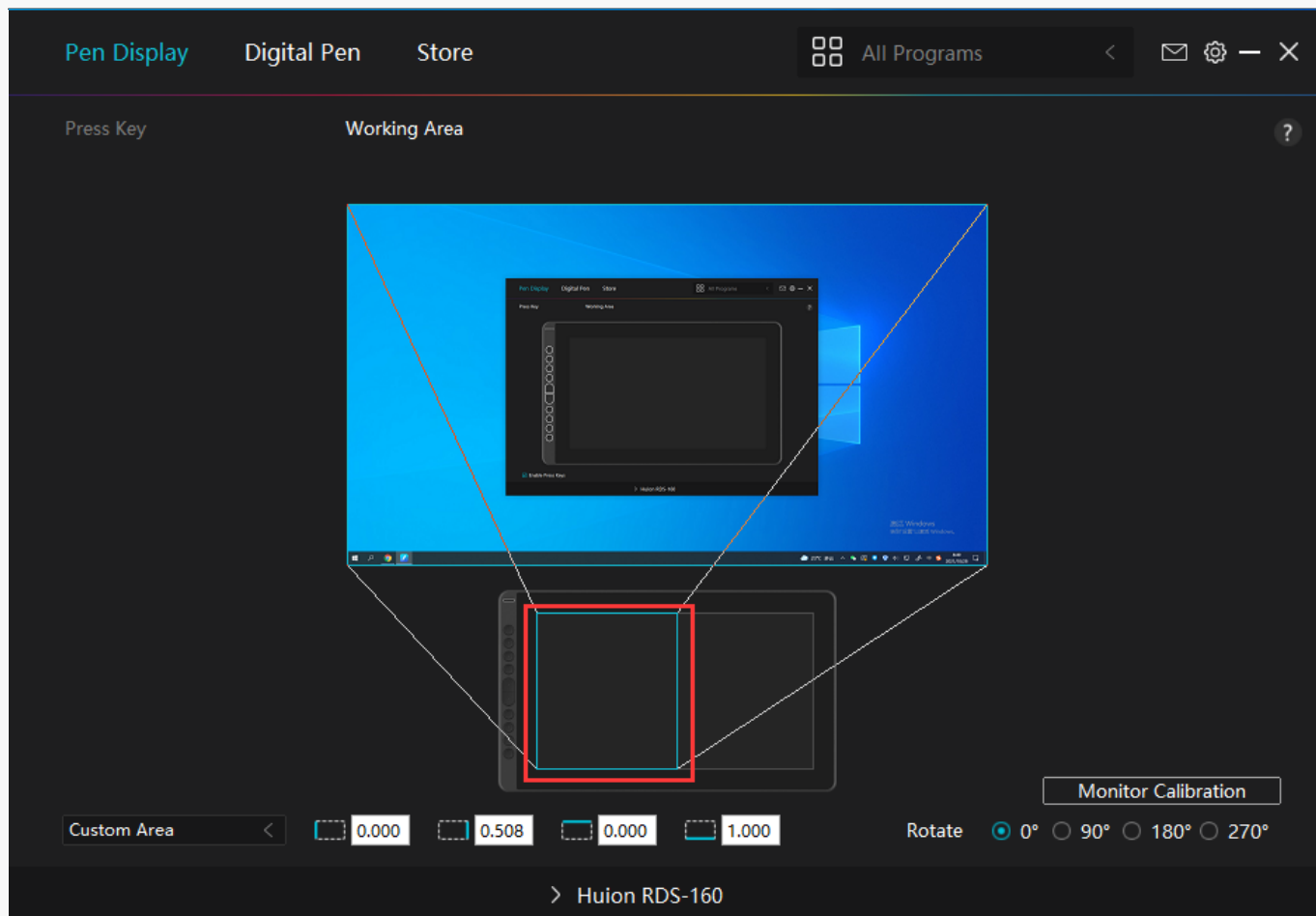
2> Drag the corners of the foreground graphic to select the screen area.



Picture 1



Picture 2

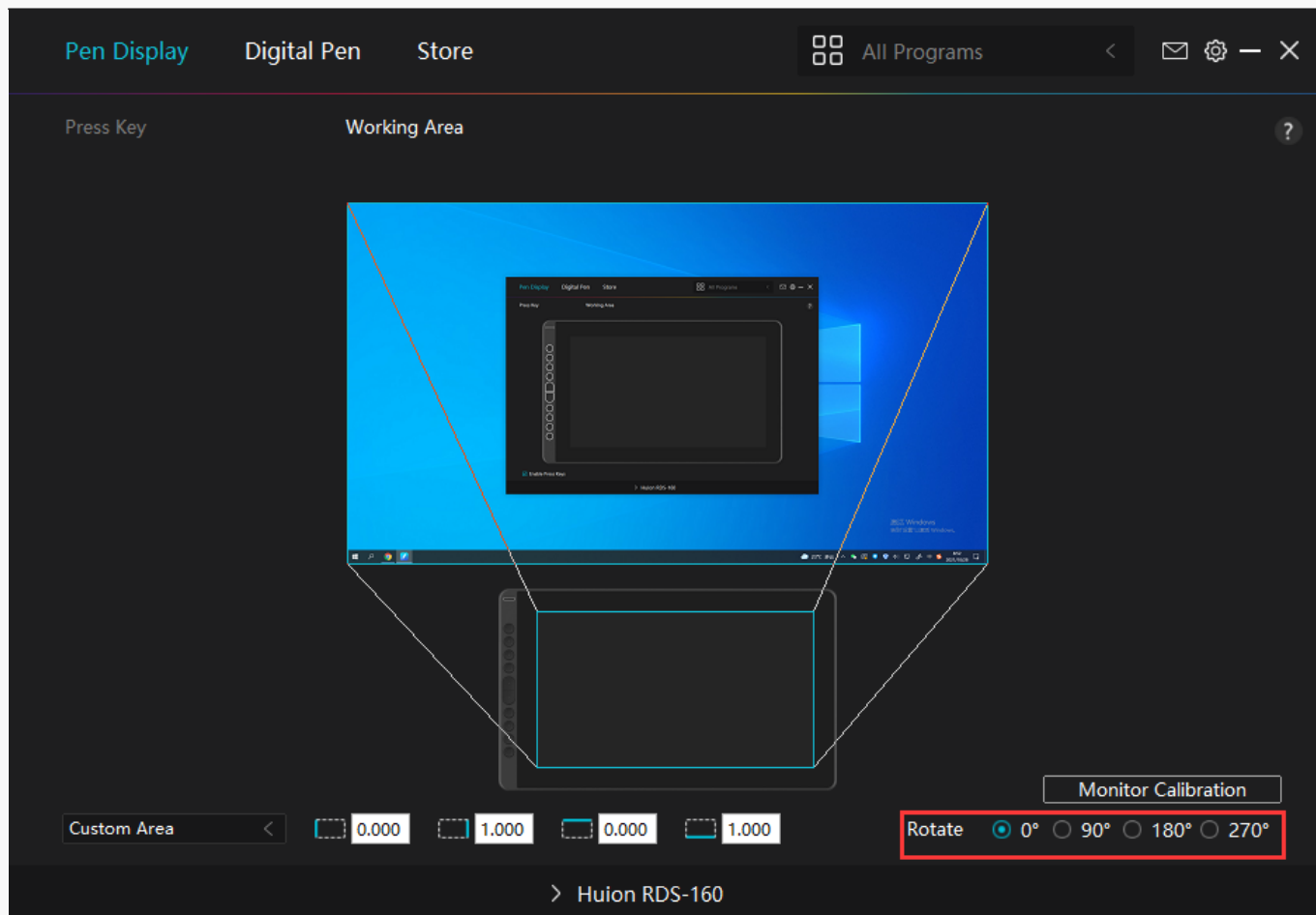


Picture 3

## 2. Rotate Working Area

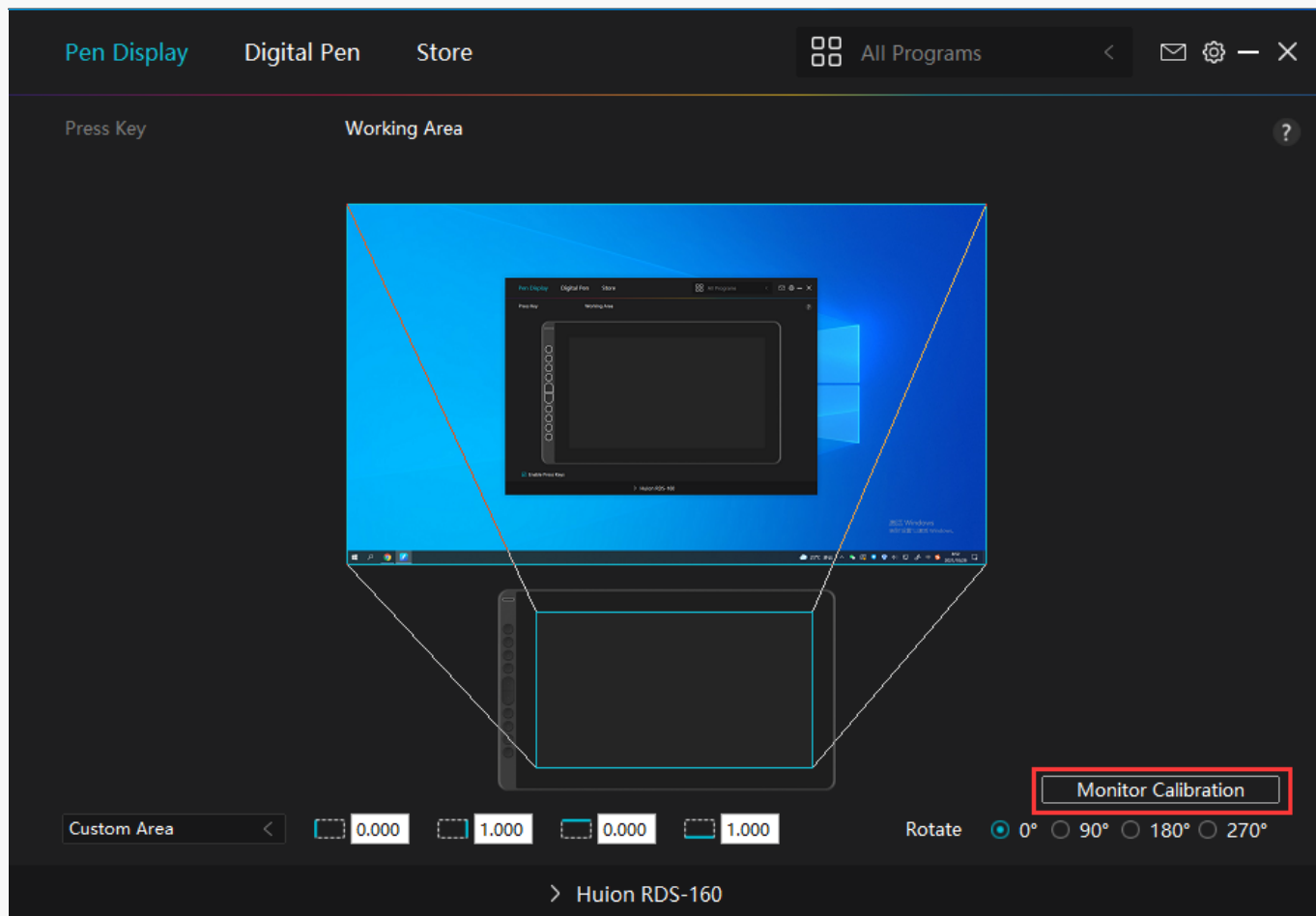
By changing the direction of the device to adapt to the left and right hand operation. You can rotate the tablet by 0°, 90°, 180° or 270°.



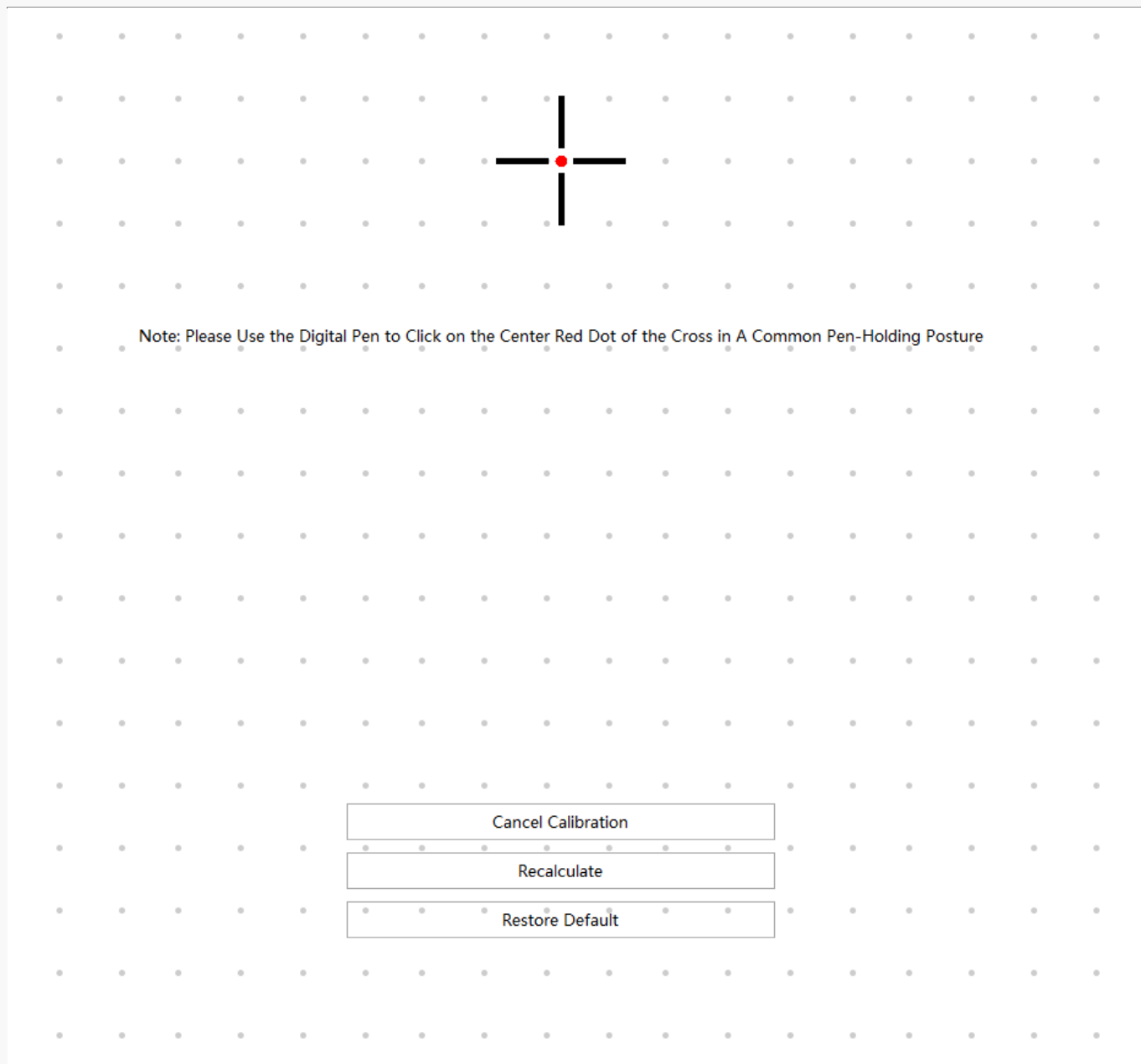


### 3. Monitor Calibration

Click "Cursor Calibration" to enter the calibration page and operate according to the prompts.



Please use the digital pen to click on the center red dot of the cross in a common pen-holding posture. You can cancel Calibration and restore default.

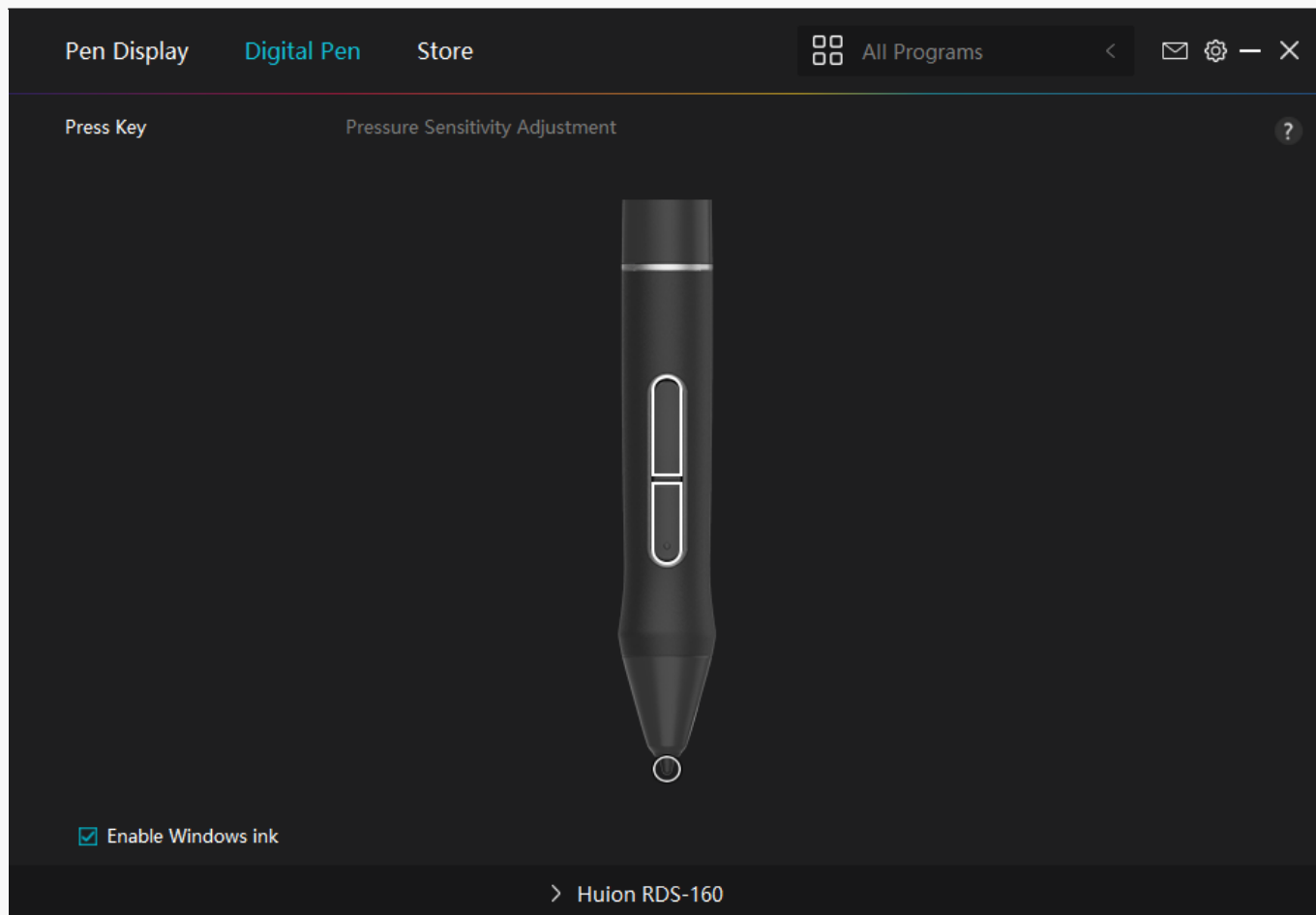


Digital Pen Setting

## 1. Press Key

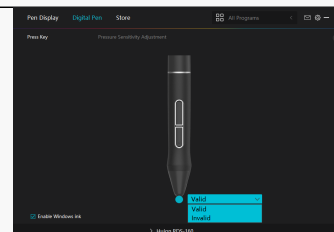
The function setting is the same as the Press Key setting of the tablet. Please refer to it.

[See Section](#)



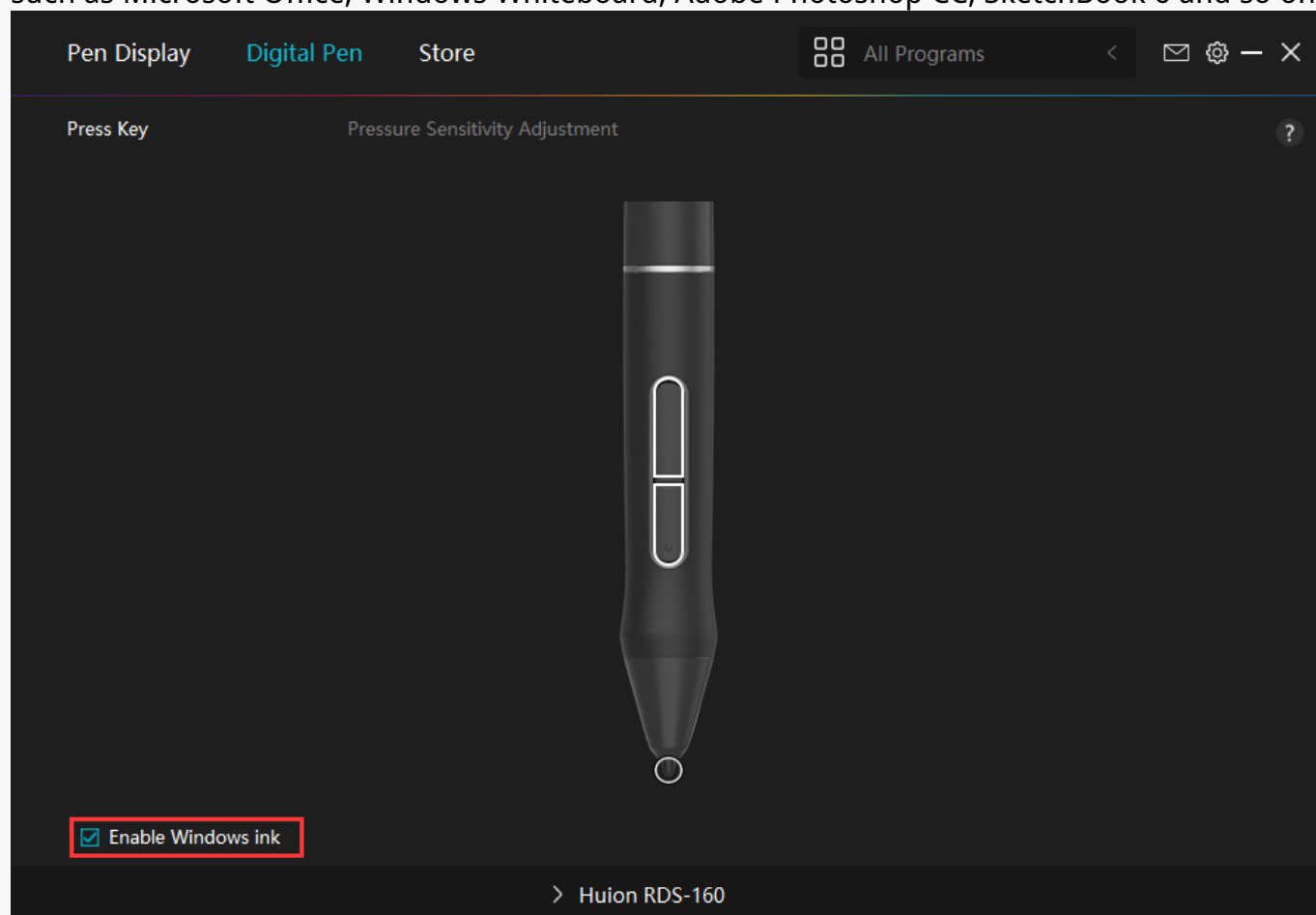
## 2. Pen Nib Activity

The pen nib of the digital pen can be set as Valid/Invalid according to users' needs. Click the drop-down button to set its activity. In Valid mode, the pen works well, and in Invalid mode, the pen has a cursor movement, but cannot complete specified actions.



### 3. Enable Windows ink

Microsoft Windows provides extensive support for pen input. Pen features are supported in such as Microsoft Office, Windows Whiteboard, Adobe Photoshop CC, SketchBook 6 and so on.



### 4. Pressure Sensitivity Adjustment

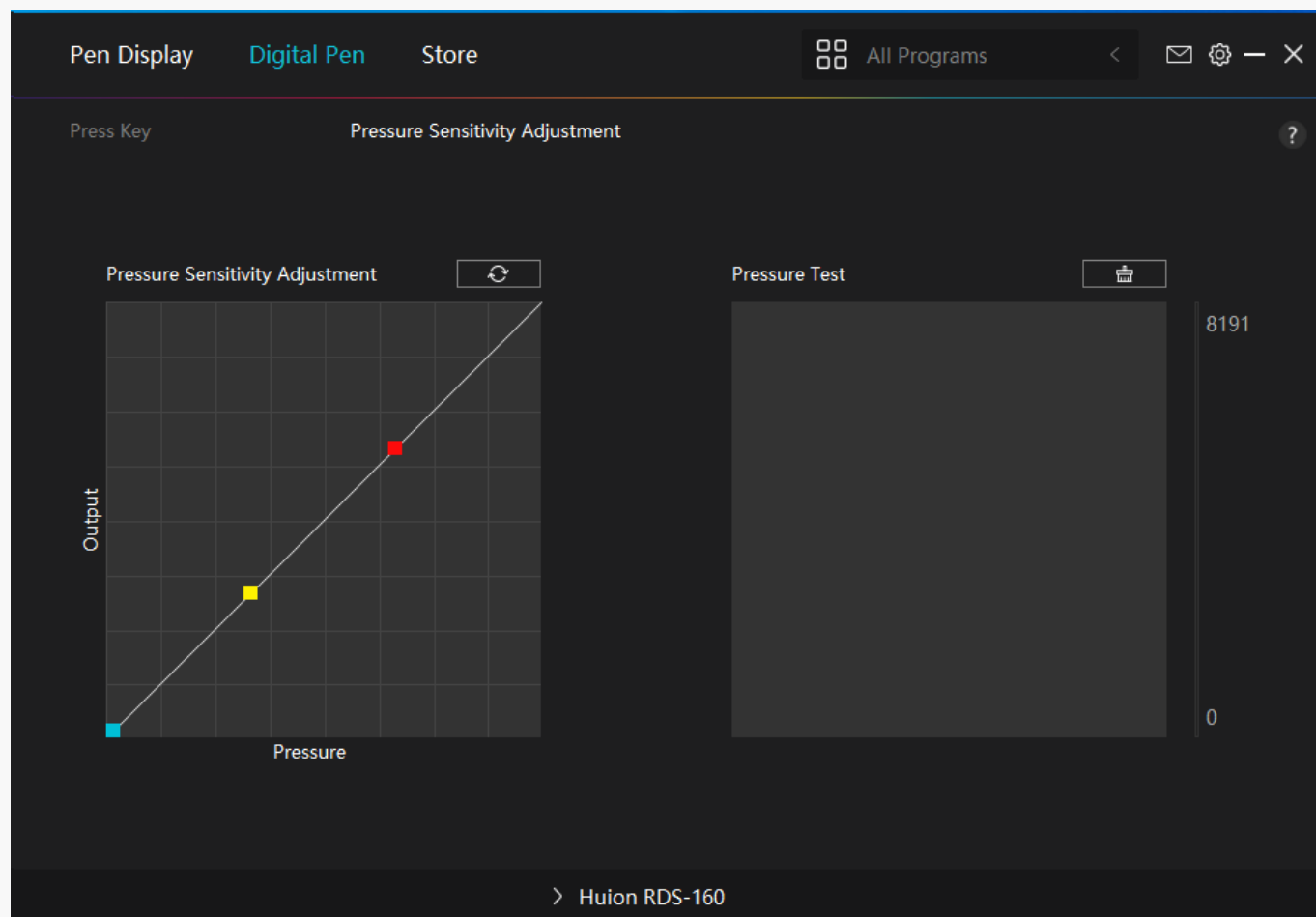
Users can adjust the pressure sensitivity level by dragging the slider in the Pressure Sensitivity Adjustment box according to your usage habits. Click the redo button at the top right to revert to the default pressure.

- (1) To decide the force required for a pen to produce a click or a pressure sensation.
- (2) You can change the slope of the pressure response curve.
- (3) To determine how much pressure needs to be applied to the pen nib to reach the highest

pressure sensitivity level.

\*Draw lines in the Pressure Test box with the pen, and the bar on the right will simultaneously show the pressure changes on the pen nib. Click the "Delete" button above to remove the lines, reset the pressure sensitivity level and test it until you find the appropriate pressure sensitivity level.

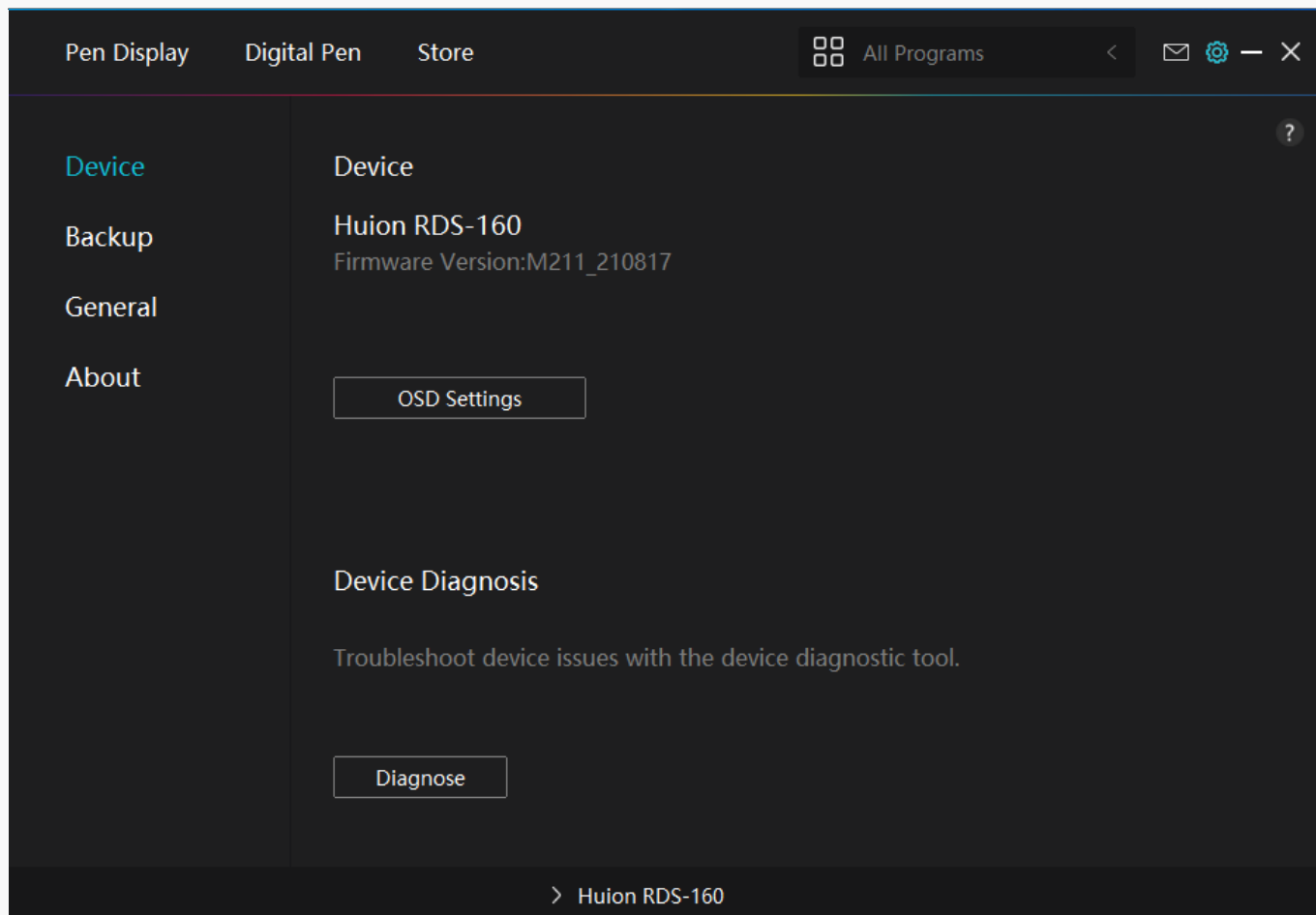
\*A steep curve means a more sensitive response.



Driver Setting

## 1. Device

You can view the information of the firmware and the connected product here.



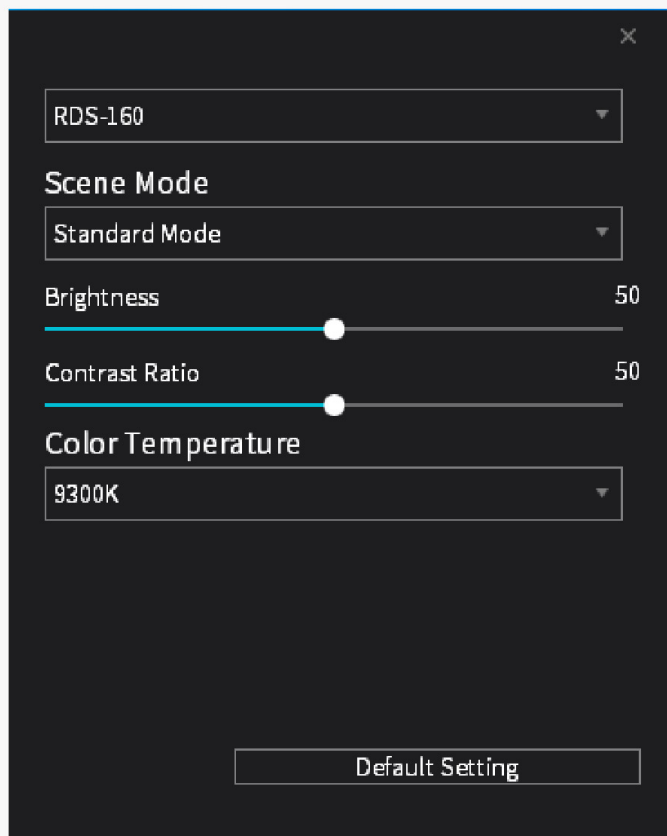
#### \*OSD Settings

Scene Mode: "Standard Mode", "Motion Mode", "Movie Mode", and "Gaming Mode" to be chosen.

Brightness: Users can drag the corresponding slider to adjust the brightness.

Contrast Ratio: Users can drag the corresponding slider to adjust the contrast ratio.

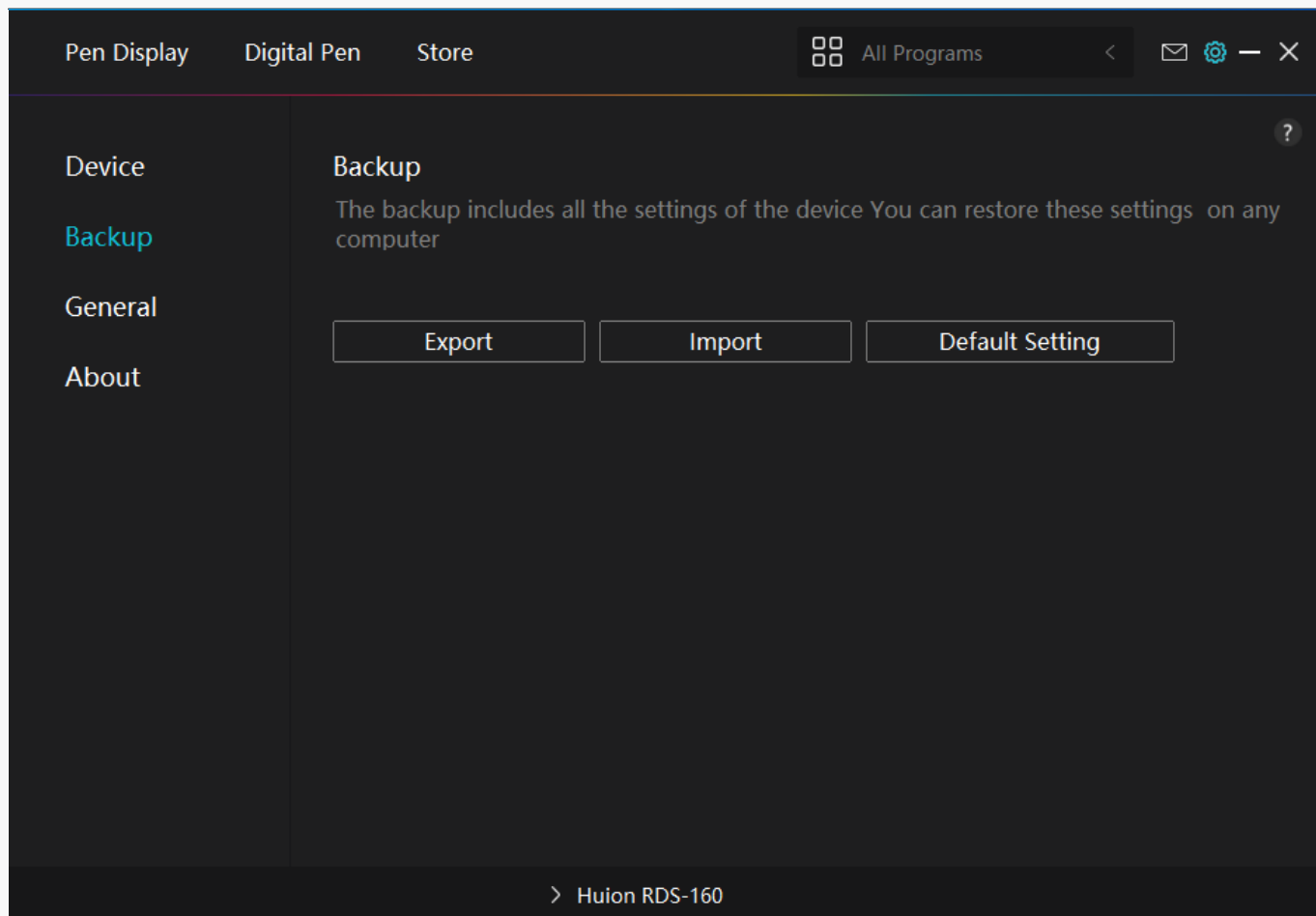
Color Temperature: "6500K", "7500K", "9300K", "USER" mode to be chosen. In "USER" mode, users can change the color temperature by adjusting the RGB value.



## 2. Backup

The Driver can import and export your custom settings, which helps to avoid repeated settings when launching a different program.





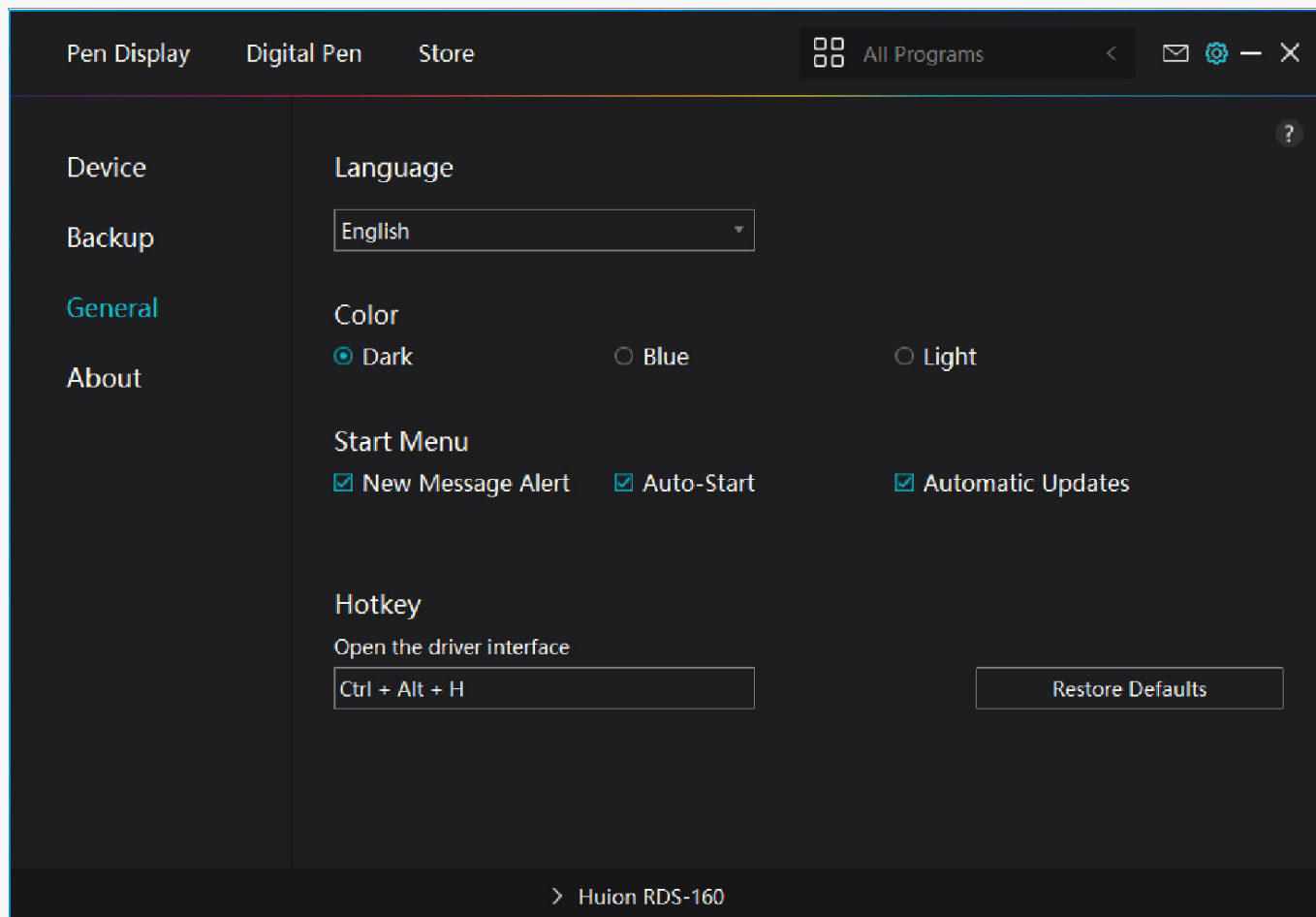
### 3. General Setting

Language: Click the drop-down button to select a language.

Color: You can select the color of the Driver interface among Dark, Blue, and Light according to your preference.

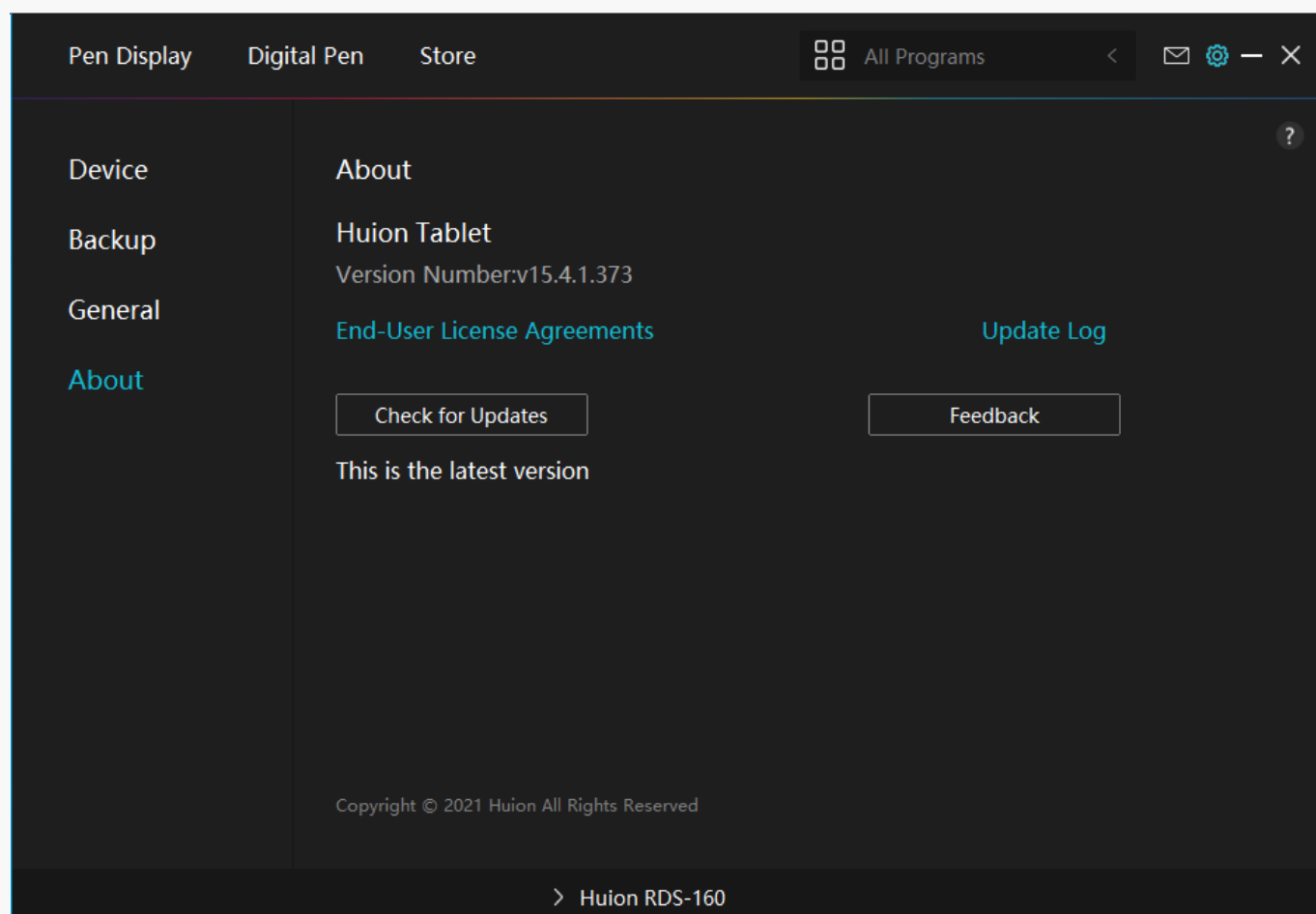
Start Menu: Click to enable or disable "Auto-Start", "New Message Alert", "Automatic Updates", "Low Battery Warning", and "Enable Game Mode Automatically".

Hotkey: You can set a hotkey to call out the Driver interface quickly according to your usage habits.



## 4. About

Users can check the Driver version number here. Click Check for Updates to view the latest Driver version and then follow the prompts to update the Driver if needed.



## Digital Pen Basic Operation

### Hold the Pen:

Hold the digital pen as you hold a real pen. Adjust your grip so that you can toggle the pen press keys easily with your thumb or index finger. Be careful not to accidentally press the key while drawing with the pen.

Note: Please place the pen on the table when it is not in use. Do not put the pen on the pen display, otherwise it may interfere with the function of the mouse and other devices, and it may also prevent your computer from entering sleep mode.

### Cursor Movement:

Move the pen slightly above the working area of the display without touching the surface of pen display, and the cursor on the screen will move to the new position accordingly. Use the digital pen to touch the screen with a certain amount of force, and then you can make a left-click.

### Click:

Tap on the pen display with the pen to register a click. Press lightly to highlight or select an

item on the screen and double-click to open it.

## Move:

Pick up a file or icon, then slide the pen nib across the display to move it.

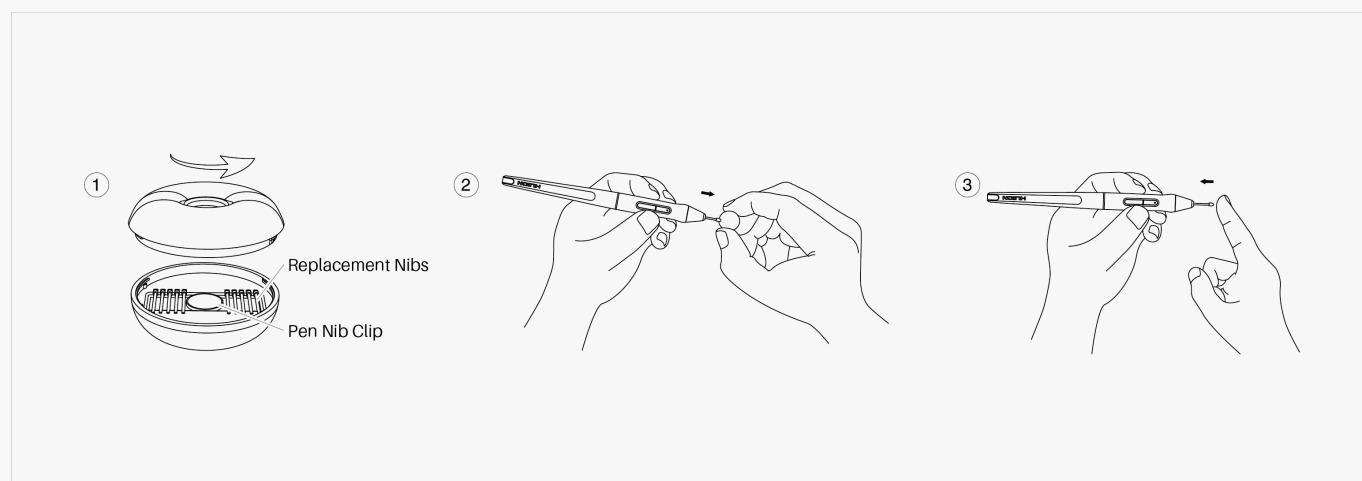
## Use the Pen Press Keys:

There are two press keys on the digital pen, whose functions can be programmed on the driver interface. The press keys on the pen will work as long as the vertical distance between the pen nib and the display is within 10mm.

## Replace the Pen Nib:

Tip: When the pen nib is badly worn, please replace it with a new pen nib timely.

1. Rotate the pen holder counterclockwise and take out a replacement nib.
2. Tilt the pen, and pull the nib out of the pen through a nib clip.
3. Insert the replacement nib straight into the barrel of the pen until the nib stops moving forward.



## Specifications

Here are the product specifications for you to learn more about the device. If you have any questions, please feel free to contact us.

The following data will vary in different usage environments and are for reference only.

## Appearance

---

Color:	Cosmo Black/Metal Gray
Dimension:	423.5 x 253 x 12mm
Workspace:	344.16 × 193.6mm
Net Weight:	1.26Kg
Stand:	ST300
Interface:	3-in-1 USB-C, Full-Featured USB-C

## Screen

---

Resolution:	1920 x 1080(16:9)
LCD Type:	IPS
AG Glass:	Anti-glare etched glass
Full Lamination:	YES
Contrast Ratio:	1000:1
Brightness:	220nit(Max.)
Response Time:	25ms
Viewing Angle: (Typ.)(CR > 10)	89°/89°(H)/89°/89°(V)
AGamut:	145% sRGB
Display Color:	16.7M(8bit)

## Technical Specifications

---

Digital Pen:	PW517
Pen Technology:	Battery-Free EMR
Pen Resolution:	5080 LPI

---

---

Pressure Sensitivity:	8192 Levels
Tilt Support:	±60°
Sensing Height:	10mm
Report Rate:	> 220PPS
Accuracy:	±0.3mm
Press Keys:	10 Programmable Press Keys

## Operating Conditions

---

Input Voltage:	USB 5V
Output Voltage:	5V 2A
Power Consumption:	≤ 10W
Standby Consumption:	≤ 0.3W
Working Temp. and Humidity:	0-40°C, 20-80%
Storage Temp. and Humidity:	-20°C~60°C, 10-90%

## OS Compatibility

---

Windows 7 or later  
macOS 10.12 or later  
Android(USB3.1 DP1.2)

### Troubleshooting Solutions

**The pen display cannot sense the pen pressure while the cursor can move**

You may have installed other drivers or run the drawing software when installing the driver. Please uninstall all the drivers, close the drawing software, and then reinstall the Huion driver. It's suggested to restart your computer after finishing the installation.

**The digital pen does not work**

1. Make sure you are using the pen that originally came with your display.
2. Make sure you installed the driver correctly.

## The press key does not work

1. Please check that the press key function is enabled in the driver;
2. Make sure you have correctly defined the press key.

## The computer cannot enter sleep mode

Please do not place the digital pen on the working area of the pen display when you are not using it, otherwise the computer will not be able to enter sleep mode.

## The press key of the digital pen does not work

The press keys of the digital pen will not work if the pen nib touches the working area of the display, or when the vertical distance between the pen nib and the display is over 10mm.

## The computer cannot recognize the pen display

Please check whether the USB port functions well. If not, please try another USB port.

If your problem is not resolved, please click [FAQs](#) to view more troubleshooting methods or email us([service@huion.com](mailto:service@huion.com)).